



CHURCHER'S  
COLLEGE

# A GUIDE FOR PARENTS

2026/2027

MAY 2026

*Limitless Potential*

# Contents

MISSION STATEMENT	3
ENTRANCE PROCEDURES AND TERMS FOR ADMISSION	4
Nursery	6
Years 1 & 2	8
Years 3 - 6	10
Senior	12
Sixth Form	14
GCSE EXAM RESULTS	16
A LEVEL EXAM RESULTS	17
VALUE-ADDED ANALYSIS	18
TRANSPORT ROUTES TO THE SENIOR SCHOOL	20
JUNIOR SCHOOL BUS NETWORK	22
FEES	24
SCHOLARSHIPS, EXHIBITIONS AND BURSARY AWARDS	26
CURRICULUM SUPPORT	28
EXTRA-CURRICULAR OPPORTUNITIES	30
CONTACT INFORMATION	34



## Mission statement

We seek to provide the widest range of experiences, but also the opportunity for children to achieve their full potential. Children at Churcher's thrive in an atmosphere of high expectation but even higher achievement, within a happy, well-disciplined, safe and caring environment.

Excellent examination results are clearly important; the achievement of these forms a core element of a child's time here, but equally, the development of self-esteem, resilience, tolerance, moral values and leadership are vitally important parts of a child's education.

By developing the full academic, creative and sporting talents of the girls and boys, within the context of non-denominational social and environmental awareness, our aim is to fully prepare them for all they will face in the dynamic and challenging world in which we live.

We aim to inspire the pupils of Churcher's College to become confident, responsible, respectful and selfless citizens in a world which will require gifted, flexible young people of character, dedication and compassion.

# A guide for parents

**Churcher's College is an independent day school for girls and boys offering Nursery, Junior, Senior and Sixth Form education.**

The school is hosted on two campus sites in Hampshire enabling the Junior School and Nursery pupils to flourish in their own beautiful grounds in Liphook, whilst maintaining close links to the Senior School and Sixth Form located in nearby Petersfield. Both sites offer on-site playing fields and unrivalled facilities, providing the comfort and opportunities of an open, green environment.

## **ADMISSIONS**

For Nursery we welcome girls and boys from the age of 3 years, with the main entry point to the Junior School being 4+ (Reception). The main entry points to the Senior School are 11+ (Year 7) and 16+ (Sixth Form). Entry at other points may be possible, depending on the availability of places.

Our Admissions Team are always happy to help so for any enquiries please contact [admissions@churcherscollege.com](mailto:admissions@churcherscollege.com) or call 01730 263033.





### **Joining Nursery or Reception**

Places fill quickly at the Junior School and Nursery so early registration is recommended to start your child's journey at Churcher's College.

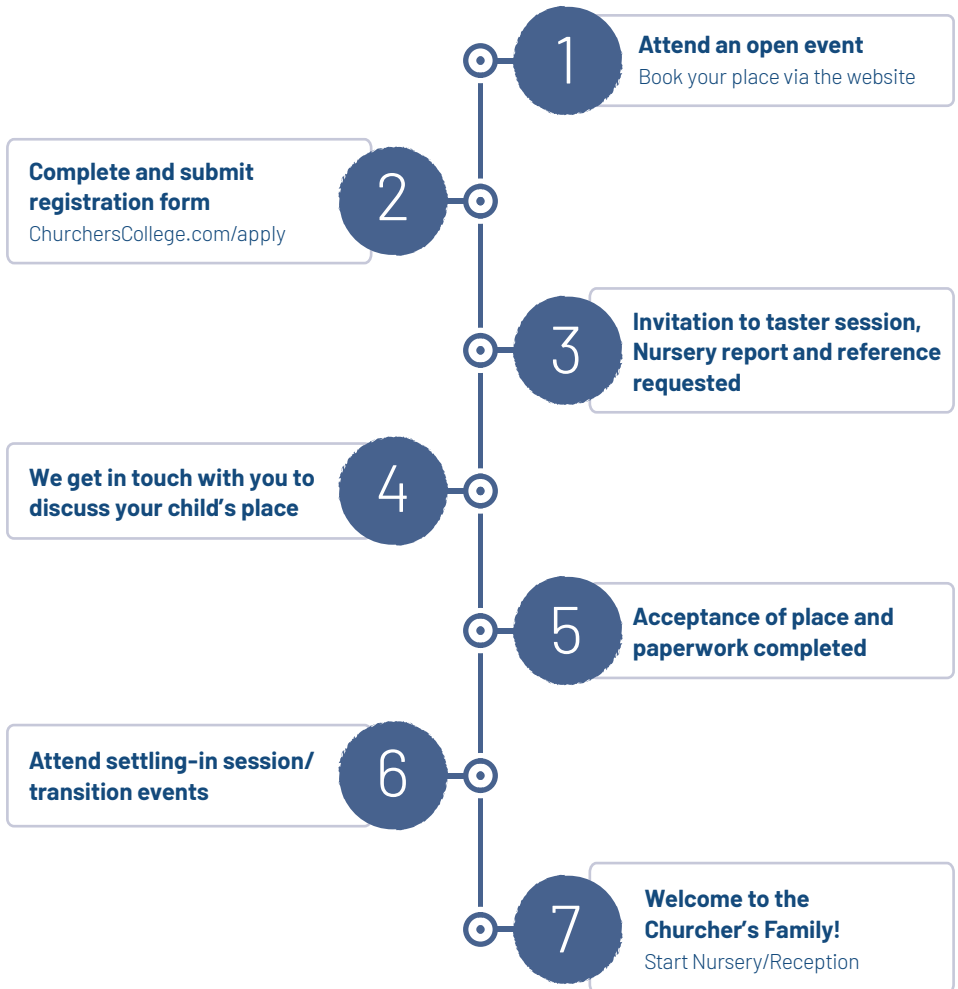
We welcome children into the Nursery from their third birthday. Progression from Nursery to Reception is based on a child's development and school readiness.

Please get in touch if you are interested in joining Churcher's College from Reception as demand for places is high.

The process to join Nursery or Reception is as follows:

1. After registering online, we will invite you and your little one to visit us. This is to ensure that the school is able to meet your child's needs. This takes around an hour and will be an opportunity for them to familiarise themselves with our environment. You will also be able to chat with us so that we can get to know you and your child.
2. If your child attends a day-care nursery, we will seek their latest report and a nursery reference related to age-related milestones.

# Admissions steps: Nursery / Reception





### **Years 1 & 2**

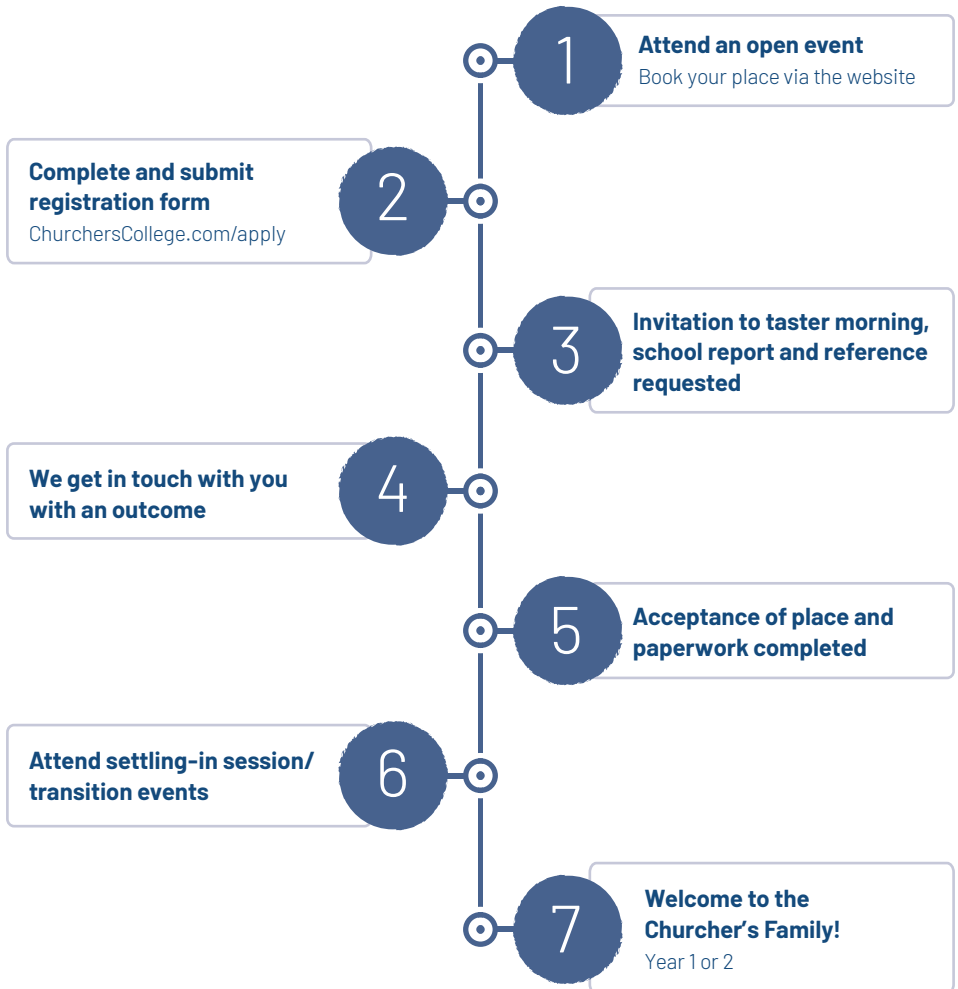
After registering, prospective Year 1 and Year 2 pupils are invited to a welcoming taster morning. During this visit, they will meet children in their current cohort and take part in lessons and activities, allowing them to experience a typical school day and gain a genuine feel for our community.

In an age-appropriate way, our teachers will assess your child's progress in English and mathematics, helping us understand how best to support their learning and ensure a smooth transition.

We will request a copy of your child's latest school report, and with your permission, a reference from their current school, to provide further insight into their academic progress, pastoral development, and overall well-being.

Once a place has been offered, your child will be invited to a settling-in day, giving them the chance to become familiar with their new classmates and surroundings before officially joining us.

# Admissions steps: Years 1 & 2





### **Joining the Junior School at Years 3 - 6**

To join us in Years 3 - 6, please register your interest by completing our online registration form. The process is as follows:

1. Registered pupils will be invited to attend one of our Taster Mornings in November or January. This is a great chance for your child to experience life at Churcher's first-hand.
  
2. At the end of January each year, there is an assessment morning which registered candidates are invited to attend. Your child will be assessed in English (spelling, reading, comprehension and writing) and Mathematics; the morning will also include some fun activities, including team games. Following this, offer letters are sent to successful candidates by mid-February.
  
3. We will request a copy of your child's latest school report, and with your permission, a reference from their current school.

### **Transition from the Junior to the Senior School**

The majority of pupils transfer successfully to the Senior School. Junior School pupils get to know our Senior School through visits and events both at the Junior and Senior School, including Science Gophers lessons, music events, hockey and swimming. These embedded links help ensure a smooth transition for our Junior School pupils when the time comes for the move at 11+ to the Senior School.

#### **Junior School Bus Service**

Many of our families live locally and travel to school by car. However, we understand logistics can be challenging, and to help families navigate the journey to and from school, we run a 'Home-to-School' bus service across Surrey and Hampshire for Year 1 pupils and above. There is also a Senior School/Junior School Link Bus for pupils in Reception to Year 6 which runs between each school with a chaperone. Please note some routes collect Senior School pupils who travel with Junior School pupils.

# Admissions steps: Years 3 – 6





### **Joining the Senior School at 11+ (Year 7)**

Children applying for 11+ entry to the Senior School will be invited to participate in a selection process that involves:

1. The group interviews – applicants and their parents will be invited in across the Autumn Term in small groups. There will be a welcome and hello from the Headmaster for all and the children will take part in small group Team Building Tasks led by members of our Senior Leadership team. Families will be offered a tour of the school with a Sixth Form student guide following the session. Children will be asked to complete and bring in a questionnaire. A reference and recent school report will be requested from your child's current school with your permission.
2. The entrance assessment – we test core learning skills in English, Maths and Verbal Reasoning and cover Year 5 national curriculum topics. Children will complete a 30-minute creative writing task followed by a 45-minute Maths paper, both set internally by our Heads of Department. The final 45-minute paper from GL Assessment has two parts; Comprehension/Spelling and Grammar (SPaG), and Verbal Reasoning. The assessment is held at the College on the penultimate Saturday in January of Year 6.

Candidates who are living overseas may take the tests under exam conditions at their current school. Interviews can be held online through a video call.

An application for your child to be included in our entrance assessment procedures should ideally be submitted over the summer between Year 5 and Year 6. Although there is no deadline, we encourage early registration but no later than October half term. Letters communicating the outcome are sent no later than ten days after the entrance assessment. The acceptance deadline is the first working day in March. All those who accept their offer of a place will receive further details of our extensive induction programme, as well as a login and access to our parent portal. New starter forms will need to be completed by May as part of the joining process.

**Entry at 13+ (Year 9)** is limited with very few places available. Applications are accepted and the entrance assessment process runs in parallel with the 11+ cycle and timings as highlighted above. Candidates take a one hour online test covering English, Maths, Verbal and Non-Verbal reasoning skills. They will also sit a 30-minute creative writing task.

# Admissions steps: 11+ (Year 7)





### **Joining the Sixth Form at 16+ (Year 12)**

Students can join Churcher's College in the Sixth Form, benefiting from the structure and space to develop academically and personally.

We hold a dedicated Sixth Form open evening each year in the Autumn Term, offering both internal and external candidates the opportunity to meet members of staff, explore subject options, view the facilities, and talk to current Sixth Form pupils.

If you are joining us from another school, there will be an interview with the Headmaster and Head of Sixth Form over the Autumn and Spring Terms of Year 11. The interviews last approximately 20 minutes and a questionnaire is shared, which will need to be completed and brought to the interview. Conditional offers are made to successful candidates following the interview if the applicant's predicted grades meet our entry requirements.

Students may be accepted to the Sixth Form on the basis of their GCSE results. Students require a minimum of 33 points from their best six GCSE results with at least a Grade 7 or 8 in two subjects to be studied at A Level. This conditional entry requirement may be amended on a case-by-case basis and is subject to change over time. Places will be confirmed once the GCSE results have been published and conditional grades have been met.

The deposit will be returned if the stipulated grades are not achieved. However, if grades are met but you choose not to take up the place, after acceptance and payment of deposit, the deposit will be retained by the school.

All those who accept their offer of a place will receive further details of our extensive induction programme, as well as a login and access to our parent portal. New starter forms will need to be completed by May as part of the joining process.

# Admissions steps: 16+ (Year 12)



## GCSE Results

Grades		9	8	7	6	5	4	3	2	Totals
<b>2025</b>	<b>371</b>	<b>311</b>	<b>300</b>	<b>229</b>	<b>92</b>	<b>23</b>	<b>2</b>	<b>0</b>	<b>0</b>	<b>1328</b>
2024	341	349	311	241	74	16	4	0	0	1336
2023	330	366	346	230	103	24	9	0	0	1373
2022	320	296	309	183	109	23	7	1	0	1248
2021	399	344	300	189	73	12	0	0	0	1317
2020	477	364	302	144	52	6	0	0	0	1345
<b>2025</b>	<b>27.9</b>	<b>23.4</b>	<b>22.6</b>	<b>17.2</b>	<b>6.9</b>	<b>1.7</b>	<b>0.2</b>	<b>0</b>	<b>0</b>	
2024	25.5	26.1	23.3	18.0	5.5	1.2	0.3	0	0	
2023	23.4	26.0	24.6	16.3	7.3	1.7	0.6	0	0	
2022	25.6	23.7	24.8	14.7	8.7	1.8	0.6	0.1	0	
2021	30.3	26.1	22.8	14.4	5.5	0.9	0.0	0	0	
2020	35.5	27.1	22.5	10.7	3.9	0.4	0.0	0	0	
Grades		9	9-8	9-7	9-6	9-5	9-4	9-3		
<b>2025</b>	<b>27.9</b>	<b>51.4</b>	<b>73.9</b>	<b>91.2</b>	<b>98.1</b>	<b>99.8</b>	<b>100.0</b>			
2024	25.5	51.6	74.9	93.0	98.5	99.7	100.0			
2023	23.4	49.4	74.0	90.3	97.7	99.4	100.0			
2022	25.6	49.4	74.1	88.8	97.5	99.4	99.9			
2021	30.3	56.4	79.2	93.5	99.1	100.0	100.0			
2020	35.5	62.5	85.0	95.7	99.6	100.0	100.0			
Average last 6 years	27.7	53.2	76.4	91.7	98.4	99.7	100.0			

# A Level Results

		Grades	A*	A	B	C	D	E	U	Totals
Number	<b>2025</b>	<b>126</b>	<b>201</b>	<b>152</b>	<b>34</b>	<b>10</b>	<b>4</b>	<b>0</b>	<b>0</b>	<b>527.0</b>
	2024	103	179	147.5	42.5	12	1	0	0	485.0
	2023	142.5	151	110.5	70.5	16.5	5	1	0	497.0
	2022	196	145	88	23	10	3	0	0	465.0
	2021	115.5	150	78	28	4	0	0	0	375.5
	2020	148.5	144	94	24	2	0	0	0	412.5
%	<b>2025</b>	<b>23.9</b>	<b>38.1</b>	<b>28.8</b>	<b>6.5</b>	<b>1.9</b>	<b>0.8</b>	<b>0.0</b>		
	2024	24.9	36.9	30.4	8.8	2.5	0.2	0.0		
	2023	25.9	30.4	22.2	14.2	3.3	1.0	0.2		
	2022	26.9	31.2	18.9	4.9	2.2	0.6	0.0		
	2021	27.9	39.9	20.8	7.5	1.1	0.0	0.0		
	2020	28.9	34.9	22.8	5.8	0.5	0.0	0.0		
		Grades	A*	A*-A	A*-B	A*-C	A*-D	A*-E		
Cumulative %	<b>2025</b>	<b>23.9</b>	<b>62.0</b>	<b>90.9</b>	<b>97.3</b>	<b>99.2</b>	<b>100.0</b>	<b>100.0</b>		
	2024	21.2	58.1	88.6	97.3	99.8	100.0	100.0		
	2023	28.7	59.1	81.3	95.5	98.8	99.8	100.0		
	2022	42.2	73.3	92.3	97.2	99.4	100.0	100.0		
	2021	30.8	70.7	91.5	98.9	100.0	100.0	100.0		
	2020	36.0	70.9	93.7	99.5	100.0	100.0	100.0		
Average last 6 years		30.9	65.9	88.8	97.5	99.5	100.0	100.0		

# Value-Added Analysis

Cambridge University's Centre for Evaluation and Monitoring provides a service which compares the achievements of children of the same age and baseline ability across the country. Their analysis is based upon a series of psychometric tests taken in Year 7 (MidYis), Year 11 (Yellis) and Year 12 (ALIS). In the case of MidYis and Yellis they are considering value-added to GCSE, and with ALIS, value-added to A Level.

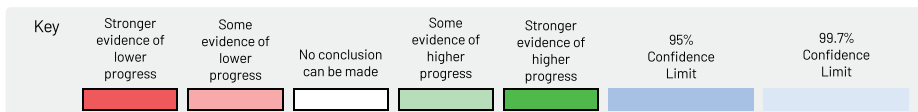
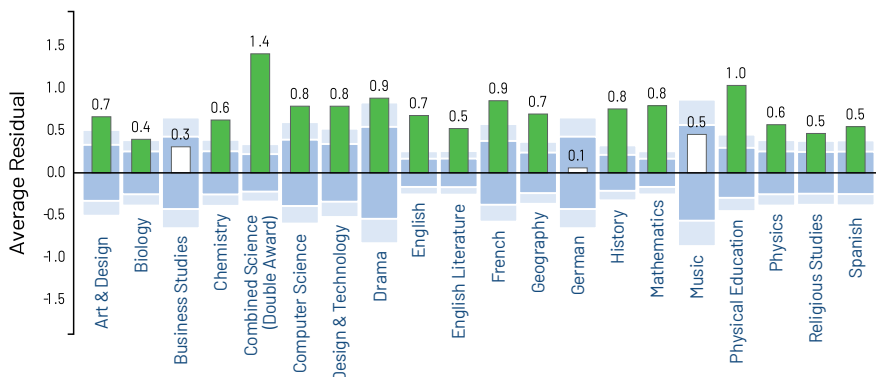
If the value-added is the same as for children of similar ability at similar schools, the score will be zero. If the value-added is a positive number, then it exceeds expectations with a score of 1 equating to a whole grade better.

The graphs below show the value-added for the previous years. The analysis for the academic year just gone are not published by Cambridge University until after the printing of this booklet. The most up-to-date information will be available via the website.



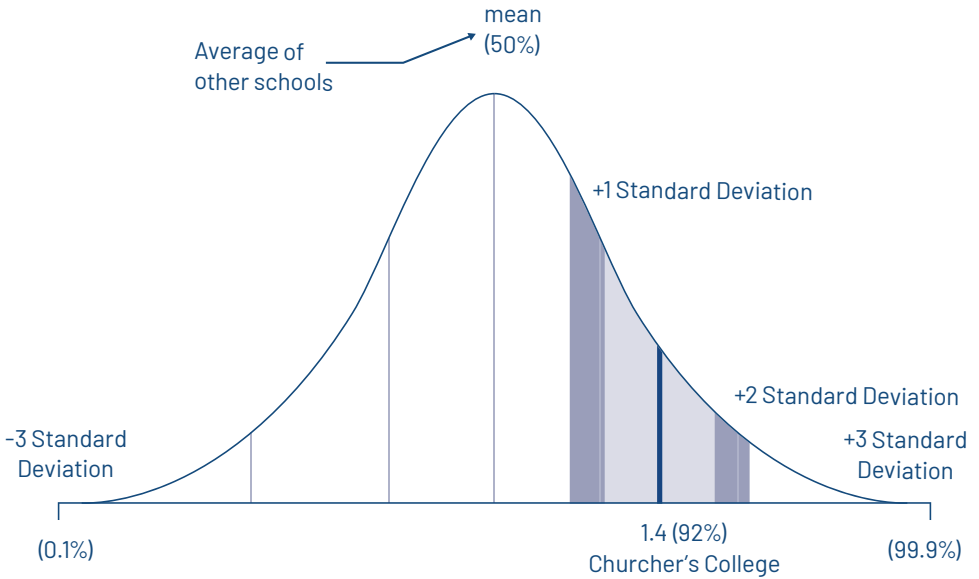
## Secondary: School Value-Added

Exam Year: 2025 | Show: National Standardisation | Year of Assessment: 2023 - 2024: Year 10 | Qualification: GCSE (9-1) | Subject(s): (multiple values) | Gender(s): All



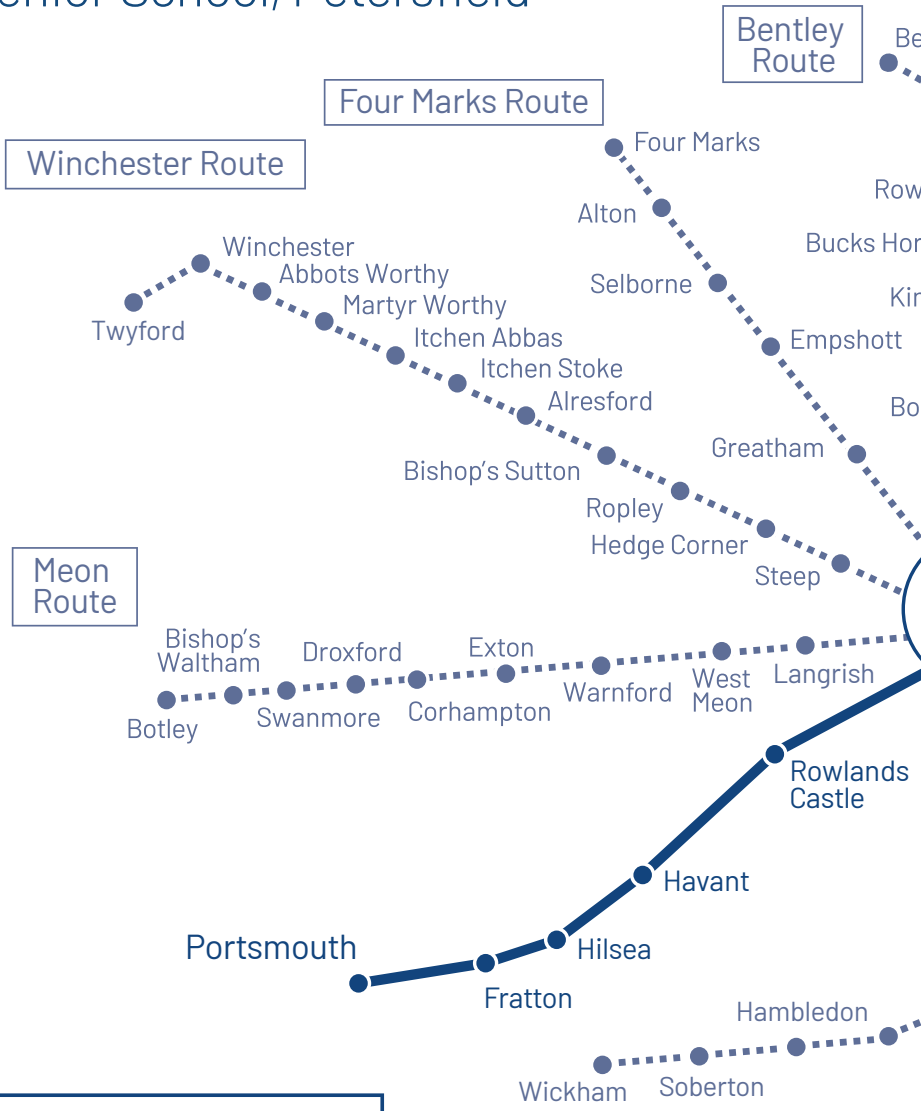
## ALIS: A Level Value-Added

Comparison of Churcher's College overall A Level value-added with schools/colleges nationally



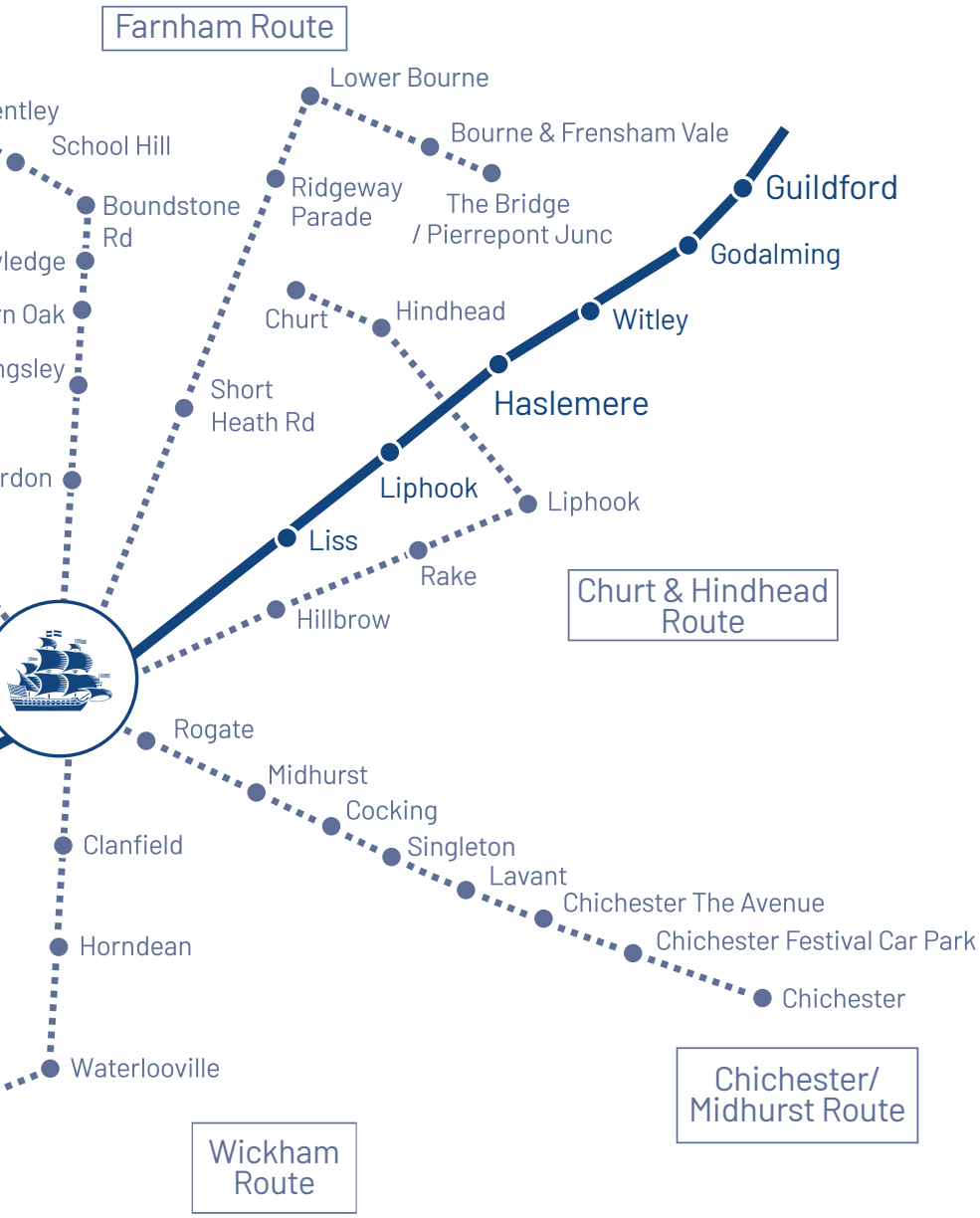
The background area is a normal distribution graph representing the distribution of the average value-added (standardised residual) scores for all schools/college in ALIS. The solid blue line is the value-added score for Churcher's College.

# Transport routes to Churcher's College, Senior School, Petersfield



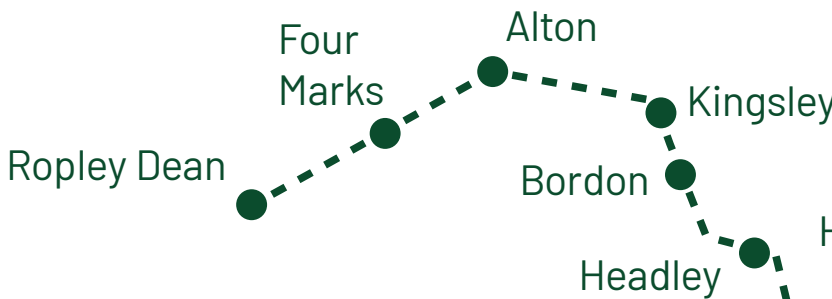
**Key**

- ..... Churcher's Bus
- Railway Line
- 10 min walk from Petersfield station

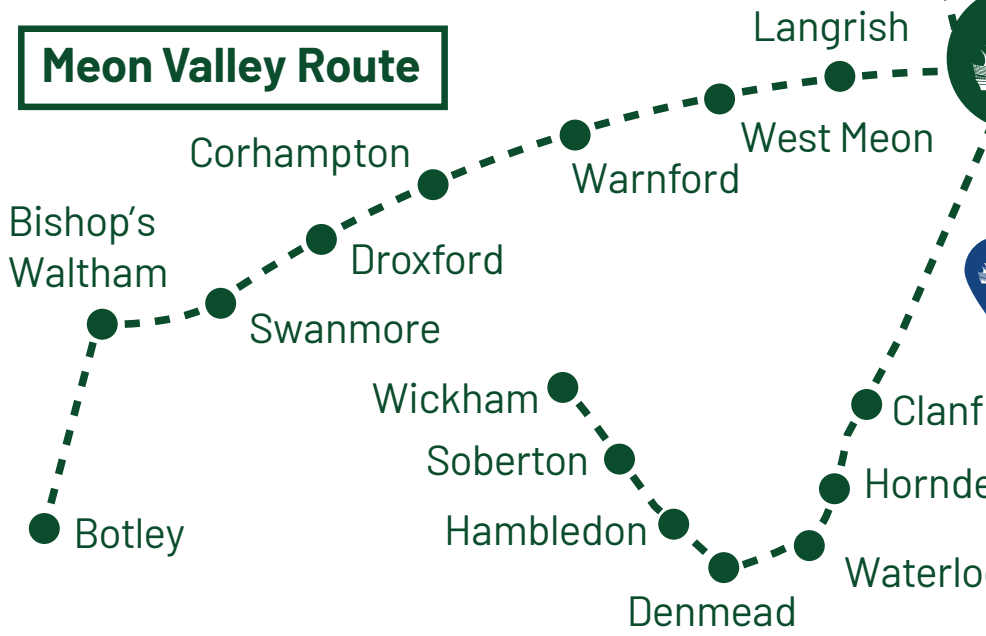


# Bus Network for the Junior School, Liphook

## Ropley/Four Marks Route



## Meon Valley Route



## Wic

## Farnham Route

Wrecclesham  
Dockenfield  
Frensham  
Churt  
Hindhead

## Godalming Route

Godalming  
Milford  
Witley  
Chiddingfold  
Haslemere

Liphook

Junior School & Nursery

Senior School link bus

ckham Route

# Fees and charges 2026/27



## Registration Fee and Deposit

Places are offered based on the results of an assessment or entrance examination, or GCSE results, as applicable. Upon acceptance of a place, parents are required to pay a security deposit, which is refundable after your child's last term at the school.

Year Group	Non Refundable Registration Fee (per child)	Deposit (per child)
Junior School & Senior School	£120 (inc VAT)	£1,200 (inc VAT)
Nursery (applicable if attending chargeable sessions)	£100	£1,200 (inc VAT)

## Tuition Fees Per Term

### Senior School

All Years	£8,330
-----------	--------

### Junior School

Years 5 - 6	£6,495
Years 3 - 4	£5,995
Reception - Year 2	£5,150
Reception with EYF credit	£4,017 / £4,255 / £4,090

*The fees shown are for payment by monthly or termly direct debit, both of which attract a 3.5% discount (fees shown are already discounted).*

The fees are inclusive of VAT, examination fees and text books.

<b>Nursery</b>	<b>Per Morning Session</b>	<b>Per Full Day with Lunch (Inc 3 hours free EYF)</b>
Owls & Pussycats (EYF)	£43.00	£61.35

### **Early Years Funding (EYF) for Nursery and Reception**

EYF is available for Nursery pupils from the term after the pupil turns three years old. Parents can use up to 15 free hours EYF during the afternoon sessions (12.30 – 3.30pm) in term time only. If the full 15 hours are not used at Churcher’s College during the term, then parents can use the additional EYF hours at other establishments. In Reception, EYF is available for pupils up to and including the term in which they turn five years old. In all circumstances, parents are required to complete a termly Parent Declaration Form.

<b>Lunch</b>	<b>Per Day</b>
Senior School	£6.75 (paid termly)
Junior School & Nursery	£6.15 (paid termly)



# Scholarships, exhibitions and bursary awards

**Academic Scholarships** are awarded in recognition of academic excellence. The majority of awards are offered following the Entrance Assessment for 11+ and 13+ candidates, when pupils are automatically considered (no separate application is required). Those already in the school will automatically be considered when entering Year 9, based on their achievements over the preceding two years. At 16+, Scholarships are awarded mainly to those already in the school through a formal process of references, interview and written exam in the Spring Term of the Fifth Year. Those applying to join our Sixth Form may be considered following their interview and invited to our Scholarship examination in March, or after publication of GCSE results. There is an expectation of a minimum grade average of 8.3.

**Academic Exhibitions** are awarded to pupils whose involvement in activities within the school is at an exceptionally high level and/or the wider community of Petersfield.

**Music Scholarships** are awarded in recognition of musical excellence. The expected standard for consideration on the first study (instrument or voice) is around Grade 5 at 11+ and around Grade 6-7 at 13+, with a second study also offered. Auditions are held in January, where applicants must play two contrasted pieces on their first study and another piece on their second study, and perform aural and sight reading tests. Applications by external pupils should be made to the Admissions office. Current pupils are automatically considered throughout their time at the school. Consideration may be given to candidates offering instruments in short supply at the College. Awards come with either 5% or 10% fee remission.

**Music Exhibitions** are awarded to pupils for a specific instrument where the school reimburses the cost of the individual music lessons.

All Scholars and Exhibition holders are required to maintain the highest standards in achievement and behaviour at the school. Music Scholars and Exhibition holders are required to be supportive of school music making, and to take part in music groups as required by the Director of Music.

**Bursary Awards** are supported by the Richard Churcher Foundation, which offers a limited number of bursaries for existing and prospective pupils at both schools. All bursaries are means-tested and can be awarded in cases where it would not otherwise be financially possible for the pupil to join or remain in the school. As a guide for the 2026/27 academic year, to be considered for

a 75% award gross parental income must be in the range £47,200 to £60,700 depending on assets, and awards are adjusted based on the expectation of applying any significant savings, investments and property equity towards school fees. All bursaries are subject to review periodically and in the event of any material change in parental income or assets.

Following an offer of a place, applications to be considered for a bursary can be made via an online form and provision of supporting documentation. Please contact the Head of Finance if you have any questions about the process at [feebilling@churcherscollege.com](mailto:feebilling@churcherscollege.com).



# Curriculum Support

Children may require, and qualify for, access arrangements for their entrance assessment. These are agreed prior to the assessment. Access arrangements allow children with specific needs to have fair, reasonable adjustments to the assessment without altering the nature or integrity of the assessment. Specific needs include learning differences, physical disabilities, medical conditions and sometimes temporary injuries. We use the JCQ document *Access Arrangements and Reasonable Adjustments* to inform which needs qualify for what arrangements. This document is available online and is updated every academic year.

Any specific need should be both supported by professional diagnostic reports and be your child's normal way of working within their current school. A professional report may be: a dyslexia diagnosis by a suitably qualified practitioner; an ADHD diagnosis by a clinical psychiatrist; a letter from a specialist paediatric service in the NHS.

The most common arrangements are: 25% extra time, supervised rest breaks, use of word processing. If your child has an existing arrangement but no formal diagnosis then supporting evidence must include age appropriate, standardised tests, conducted no earlier than the previous academic year, ie Year 5 or Year 7, along with official confirmation from their current SENCO equivalent.

Each application is considered individually against the JCQ criteria, their normal way of working and the professional report. In line with JCQ, arrangements must not advantage the pupil. Assessments and/or reports will be requested as part of the application and admissions process. In cases where a child may benefit from a weekly 1:1 session to support their learning, a lesson can be scheduled, which would incur an additional charge. Parents are welcome to speak to our Curriculum Support team if further information is required.



# Senior School extra-curricular opportunities

The programme varies from year to year, dependent upon pupil demand, and is set early in September of any given academic year. An example of the range of activities available is listed below (subject to change).

Adventurous Training	Design & Technology	Musical Theatre Club
Ancient Book Club	Devizes to Westminster	Open Water Swimming
Art Clubs	Canoe Marathon	OSCA Adventure Club
Ceramics	Digital Photography and	Philosophical Society
Textiles	Photoshop	Plot Twist- Creative Writing Club
Life Drawing (Sixth Form)	Drama Clubs	Puzzles and Board games
Backstage Club	Duke of Edinburgh's Award	Dark Room Photography
Basketball	Scheme	Raspberry Pi Competition
Book Club	ECO Club	Science Clubs
Charities Club	Equestrian Club	Senior Academy
Chess Club	Fencing Club	Swimming
Christian Union Club	Fitness Club	Table Tennis
Combined Cadet Force (CCF)	Football Club	Tennis Club
Army, Navy, RAF	Gaming Club	Ten Tors & Charlton Chase
Climbing	Girls Rugby	Tycoon Programme
Club Français	Gophers Science Club	Singer/Songwriter Club
Community Action Service (CAS)	Greenpower Car Club	Senior & Middle School Expeditions
Coding Club	Gymnastics Club	World Challenge
Computing Clubs	History Club	First Challenge
Cosmetics Chemistry Club	Junior Academy	Water Polo
Cross Country Club	LAMDA	Young Writers Club
Cyber First	Law Society	
Dance Clubs	Linguistics Club	
Debating Society	Literacy Club	
	Model United Nations	
	Music Tech Club	

## Music Ensembles:

Barbershop	Junior Jazz Band
Blues Group	Junior Strings
Brass Groups	Orchestra
Chamber Choirs	Recorder Group
Clarinet Group	Rock School
Flute Group	Senior Choir
Guitar Group	SSA Choir
Horn Chorus	String Quartets
Jazz Group	Trebles Choir
Junior Choir	Wind Bands

## Major Sports:

Athletics
Cricket
Cross Country
Hockey
Netball
Rugby
Rugby 7s
Swimming
Tennis





## Junior School extra-curricular opportunities

The clubs and activities vary from term to term and from year to year; an example of the range of activities available is listed below:

Art Club	Fencing	Netball
Ballet	Football	Only Girlz Aloud
Big Band Club	Forestry Club	Orchestra
Big Sing	French Club	Playball
Board Games Club	Gardening & Nature Club	Poetry Competition Club
Chess	Golf Club	Rugby Club
Choir (Y1 & Y2)	Gymnastics Club	Run Club
Climbing Club	Hockey	Spanish Club
Coding Club	Junior Boi Beatz	Street Dance
Cricket Club	Karate	Tap Dance
Cross Country/Orienteering	Keyboard Club	
Drama Club	Lego Club	
Enamelling	Maths Club	



## Individual private music lessons

Churcher's College offers the opportunity for pupils to take individual, private music lessons with visiting professional music teachers during the school day. Pupils can also put instrumental music knowledge into practice via the various Performing Arts opportunities on offer.

The relationship between the music teacher and parent is direct and all fees, terms and conditions will be dealt with individually with your chosen music instrument teachers.

# Website references

## **Policies**

The latest versions of the School's key regulatory policies are published on the School's website at [www.churcherscollege.com](http://www.churcherscollege.com) and are available in hard copy from the School Office.

## **Staff & Governors**

Names and roles are published on our website [www.churcherscollege.com](http://www.churcherscollege.com) within the Welcome to Churcher's menu.

# How to contact us

## **SENIOR SCHOOL**

Churcher's College  
Ramshill  
Petersfield  
Hampshire  
GU31 4AS

01730 263 033  
[enquiries@churcherscollege.com](mailto:enquiries@churcherscollege.com)

## **JUNIOR SCHOOL & NURSERY**

Churcher's College Junior School & Nursery  
Midhurst Road  
Liphook  
Hampshire  
GU30 7HT

01730 236 870  
[hello@churcherscollege.com](mailto:hello@churcherscollege.com)

*Churcher's College, a charitable company limited by guarantee registered in England and Wales with company number 10813349 and registered charity number 1173833.*

*Registered office address: Ramshill, Petersfield, United Kingdom, GU31 4AS.*





**CHURCHER'S  
COLLEGE**

*Limitless Potential*

ChurchersCollege.com

