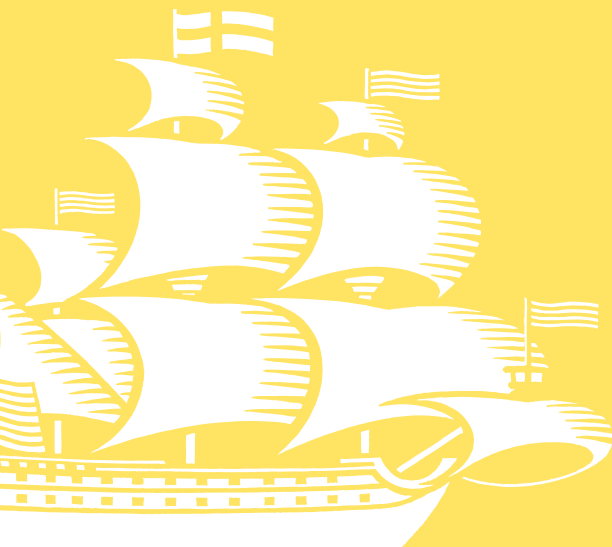




CHURCHER'S
COLLEGE

CALENDAR

SUMMER TERM 2025



2025

January						
Su	M	Tu	W	Th	Fri	Sa
			1	2	3	4
5	6	7	8	9	10	11
12	13	14	15	16	17	18
19	20	21	22	23	24	25
26	27	28	29	30	31	

February						
Su	M	Tu	W	Th	Fri	Sa
						1
2	3	4	5	6	7	8
9	10	11	12	13	14	15
16	17	18	19	20	21	22
23	24	25	26	27	28	

March						
Su	M	Tu	W	Th	Fri	Sa
						1
2	3	4	5	6	7	8
9	10	11	12	13	14	15
16	17	18	19	20	21	22
23	24	25	26	27	28	29
30	31					

April						
Su	M	Tu	W	Th	Fri	Sa
			1	2	3	4
5	6	7	8	9	10	11
12	13	14	15	16	17	18
19	20	21	22	23	24	25
26	27	28	29	30		

May						
Su	M	Tu	W	Th	Fri	Sa
					1	2
3	4	5	6	7	8	9
10	11	12	13	14	15	16
17	18	19	20	21	22	23
24	25	26	27	28	29	30
31						

June						
Su	M	Tu	W	Th	Fri	Sa
1	2	3	4	5	6	7
8	9	10	11	12	13	14
15	16	17	18	19	20	21
22	23	24	25	26	27	28
29	30					

July						
Su	M	Tu	W	Th	Fri	Sa
		1	2	3	4	5
6	7	8	9	10	11	12
13	14	15	16	17	18	19
20	21	22	23	24	25	26
27	28	29	30	31		

August						
Su	M	Tu	W	Th	Fri	Sa
					1	2
3	4	5	6	7	8	9
10	11	12	13	14	15	16
17	18	19	20	21	22	23
24	25	26	27	28	29	30
31						

September						
Su	M	Tu	W	Th	Fri	Sa
	1	2	3	4	5	6
7	8	9	10	11	12	13
14	15	16	17	18	19	20
21	22	23	24	25	26	27
28	29	30				

October						
Su	M	Tu	W	Th	Fri	Sa
			1	2	3	4
5	6	7	8	9	10	11
12	13	14	15	16	17	18
19	20	21	22	23	24	25
26	27	28	29	30	31	

November						
Su	M	Tu	W	Th	Fri	Sa
						1
2	3	4	5	6	7	8
9	10	11	12	13	14	15
16	17	18	19	20	21	22
23	24	25	26	27	28	29
30						

December						
Su	M	Tu	W	Th	Fri	Sa
	1	2	3	4	5	6
7	8	9	10	11	12	13
14	15	16	17	18	19	20
21	22	23	24	25	26	27
28	29	30	31			

Holidays and Observancies

1	Jan	New Year's Day	25	Aug	Summer Bank Holiday (WAL, ENG, NIR)
18	April	Good Friday	31	Oct	Halloween
20	April	Easter Sunday	5	Nov	Guy Fawkes Day
21	April	Easter Monday (WAL, ENG, NIR)	25	Dec	Christmas Day
5	May	Early May Bank Holiday	26	Dec	Boxing Day
26	May	Spring Bank Holiday			



CHURCHER'S
COLLEGE

CALENDAR

SUMMER TERM 2025

CHURCHER'S COLLEGE

Petersfield

Hampshire GU31 4AS

Tel: 01730 263033

Fax: 01730 231437

Emergency Contact Tel: 07795 190947

e-mail: enquiries@churcherscollege.com

www.churcherscollege.com

Bad Weather check link:

<https://my.churcherscollege.com/fixtures>

Key

Items in **BOLD CAPITALS** for Parental notice

Items in *italics* for Academic notice

Items in **Red** for Girls' Sporting Activities

Items in **Light Blue** for Boys' Sporting Activities

TERM DATES

2025

SUMMER TERM 2025

Starts: Monday 28 April **Ends:** Friday 4 July

Bank Holiday: Monday 5 May

Half Term: Saturday 24 May – Sunday 1 June

AUTUMN TERM 2025

Starts: Tuesday 2 September (L6 & 1st Year Pupils)

Wednesday 3 September (All Pupils)

Ends: Friday 12 December

***Half Term:** Friday 24 October – Sunday 2 November (incl.)

**These dates have been changed from previously published dates*

2026

SPRING TERM 2026

Starts: Tuesday 6 January **Ends:** Friday 27 March

Half Term: Saturday 14 February – Sunday 22 February

SUMMER TERM 2026

Starts: Monday 20 April **Ends:** Friday 10 July

Bank Holiday: Monday 4 May

Half Term: Saturday 23 May – Sunday 31 May

Acceptance of a place at Churcher's College implies that parents and pupils appreciate that Churcher's College is a private community, with specific rules and regulations to which all pupils must conform.



**CHURCHER'S
COLLEGE**

COLLEGE RULES & INFORMATION

COLLEGE RULES & INFORMATION



SCHOOL RULES AND INFORMATION

INTRODUCTION

Churcher's College is a co-educational independent day school with a high reputation. Its good name depends on the conduct and appearance of its pupils, who must always behave in a responsible manner, both in school and outside.

SCHOOL HOURS

School begins at 8.30am and finishes at 4.00pm.

Under normal circumstances, pupils should not be on the school premises before 8.00am.

Unless pupils are involved in an activity supervised by a member of staff, they should be out of the school buildings by 4.15pm and be off site by 4.45pm. Duty staff are available during this time to monitor pupils leaving and to try to ensure a safe departure. Pupils waiting to be collected should remain behind the bollards at the front of Old College. Only pupils who are attending an after school activity or working in the library may remain on the school premises until 5.30pm. The exception to this is Sixth Form students who may remain in the Ramshill Sixth Form Centre until 6.00pm.

The school is aware that occasionally transport arrangements break down. In such circumstances pupils should come to the School Office in order that they may contact parents.

Pupils who cannot be collected at the end of school may work in a supervised environment in the library until 5.30pm.

ABSENCE

Absence due to illness: When your child is absent from school due to ill health, you should inform the school by 9.00am on each day of absence. This can be done by telephoning and leaving a message at the School Office or by emailing absence@churcherscollege.com. If this communication is not received, the school will endeavour to contact you at home, by 10.30am at the latest, to ascertain the reason for absence.

If the absence persists for a five day period, you should email absence@churcherscollege.com or your child's Form Tutor giving more details.

Absence requests: Absences for normal medical and dental appointments should also be notified to the School Office by email to absence@churcherscollege.com and copied to the Form Tutor. Requests for non-medical or longer absences should be submitted to the Headmaster in writing. School policy is to grant such leave only in exceptional circumstances in order to avoid a detrimental effect upon the education of the pupil concerned.

Further details of the school's attendance and absence procedures can be found in the Attendance Policy, which is published on the school's website at www.churcherscollege.com.

PE/Games: If your child is unable to take part in a PE/Games lesson, please email the relevant PE teacher directly. Pupils should attend the PE/Games lesson with their class as timetabled and, if appropriate to their injury/illness, they still need to bring kit and get changed to participate in the lesson in a coaching/officiating role.

If your child is unable to take part in PE/Games for more than one week, please inform the School Nurses (schoolnurses@churcherscollege.com) and the Director of Sport (bskirving@churcherscollege.com). Please copy in your child's Head of House.

CONCERNS AND COMPLAINTS

In all cases we wish to encourage a close rapport between school staff and families. This relationship can often resolve issues at first hand and assist in the development of our sense of community.

All members of the school wish to be informed if there are any matters about which pupils and parents are unhappy.

In the 1st to 5th Year, the normal lines of communication for pastoral issues will be through the Form Tutor, Head of House, Senior Teacher (Pastoral), Deputy Head (Pastoral) and then to the Headmaster. Academic issues should be raised with the Form Tutor, subject teachers, or Heads of Department or Head of Faculty. Also the Deputy Head (Academic) and Headmaster can be contacted if appropriate.

All students have a Personal Tutor throughout their two years in the Sixth Form. The tutor will generally act as an adviser over academic and other matters. The Head of Sixth Form and Deputy Heads of Sixth Form are also available for advice, in conjunction with the Heads of House.

Parents who wish to make a formal complaint, should write directly to the Headmaster except when the complaint is against the Headmaster when they should write to the Chair of Governors at the school address (c/o The Clerk to the Governors at bursar@churcherscollege.com). For further details, please see the school's Complaints Policy and Procedures, which is published on the school's website and available in hard copy on request from the School Office.

Any complaint that involves an allegation of abuse will be dealt with according to the school's Child Protection and Safeguarding Policy and Procedures, which will normally involve referral to Children's Services and, where appropriate, the Police in line with Hampshire Safeguarding Children Partnership procedures.

SAFEGUARDING AND CHILD PROTECTION

Churcher's College is committed to safeguarding and promoting the welfare of children and young people and expects all staff and volunteers to share this commitment. The following members of staff have specific responsibility for child protection in the Senior School:

Designated Safeguarding Lead:

Mr Chris Jones, Deputy Head
(Pastoral)

Deputy Designated Safeguarding Leads:

Mr Richard Hoe, Senior Teacher
(Wellbeing, Inclusion and Safeguarding)
Mrs Suzanne Herrington, Senior Teacher
(Pastoral)

Mr William Baker, Head of Sixth Form

The School has an online reporting system, Confide, through which pupils can raise concerns, including the option to do so anonymously. The Confide app appears on the desktop of school computers, irrespective of whether the pupil is logged on to the network or not.

POLICIES

The latest versions of the school's key regulatory policies are published on the school's website at www.churcherscollege.com and are available in hard copy on request from the School Office.

ASSEMBLIES

Assemblies commence at 8.35am following morning registration. There is a Whole School Assembly every Thursday in the Sports Hall.

House Assemblies usually take place once every two weeks, and are as follows:

Monday: Collingwood & Grenville

Tuesday: Nelson

Wednesday: Drake & Rodney

Section Assemblies (for a year group(s)) generally take place on Friday.

The venues for House and Section Assemblies vary between the Donald Brooks Auditorium, Lecture Theatre and Sports Hall. Pupils will be directed to the correct venue by their Form Tutor.

THE HEALTH & WELLBEING CENTRE

Mr Hoe, the Senior Teacher (Wellbeing, Inclusion and Safeguarding) has overall responsibility for the Health & Wellbeing Centre, which is located opposite the MUGA (Multi-Use Games Area).

The School Nurses are based in the Health & Wellbeing Centre. Unless there is an emergency, pupils must first get the permission of a member of staff before visiting the Nurses.

The School Counsellor, Mrs Wakeland, is available to meet with pupils in the Health & Wellbeing Centre.

Pupils can make an appointment to see Mrs Wakeland by emailing her directly (counsellor@churcherscollege.com) or by making an appointment in confidence through the School Nurses or via the online booking system.

GENERAL RULES

(1) Travel

All pupils must wear the school uniform on the way to and from school and must observe the common rules of courtesy when using public transport. No pupils may hitch hike.

All pupils who wish to drive to school or be driven by other pupils must read the Driving to School Policy and return the form signed by their parents, as appropriate. The Policy may be obtained from the Sixth Form area of Firefly and completed forms should be returned to the Head of Sixth Form.

Pupils cycling to school must dismount outside the school gates and wheel their cycles. Cycling round the school site is forbidden.

Vehicles and bicycles are kept at school at the owner's risk, and pupils are advised to keep them locked/padlocked.

(2) Punctuality

All pupils are expected to be punctual at all times. Pupils who arrive late must sign in at the School Office.

(3) Behaviour

Silence must be observed by pupils when entering and leaving assembly and in the library.

Pupils are expected to stand up when a member of staff or visitor enters a classroom and to allow visitors to leave a room first.

In New College, Goodfield and the Science Building, pupils must observe the one direction rule, up and down stairs and through entrances.

(4) Break and Lunch Hour

Packed lunches must be eaten in the Dining Hall. Only students in the Sixth Form have permission to leave the school grounds during the lunch hour (in accordance with the rules contained in the Sixth Form Handbook).

The library is open during break and lunchtime, when pupils may borrow books, play board games or use the computers for school work. Lower Sixth Peer Mentors are based in the library and provide support to younger pupils.

The Tuck Shop is situated in the Dining Hall and is open at morning break time (from the second week of the Autumn Term). It operates on a cash basis. Pupils may also purchase hot breakfast items from the Dining Hall between 8.00am and 8.30am.

(5) Access to school buildings and wet weather routine

Pupils are not allowed into New College, the upstairs of Old College, the Science Building and Goodfield until 8.20am. In wet or very cold weather, pupils will be allowed in from 8.10am. Pupils have access to the Dining Hall from 8.00am.

During wet weather breaks or lunchtimes, pupils below the 5th Year should go to the rooms in New College that they have been assigned to; these rooms are allocated according to year groups. 5th Year pupils can use their Common Room, and the Sixth Form can use Ramshill.

New College will normally be open during cold and wet weather. It is expected that pupils will remain outside when the weather is fine. The library is open for pupils to sit quietly and read or do work.

Pupils are not allowed in the Sports Hall unless a member of staff is present. Other rules concerning its use will be explained by members of the PE staff.

Access to the Computer/Art building is limited to lesson times, except under the supervision of a member of the teaching staff.

(6) Prohibited in School

The following items are prohibited and must not be brought into school:

- knives or weapons (including toy weapons and catapults)
- alcohol
- illegal drugs
- stolen items
- smoking related materials including tobacco and cigarette papers, lighters and matches
- smoking related products including e-cigarettes, vapes and nicotine substances such as snus and nicotine pouches
- fireworks
- pornographic images
- chewing gum
- laser pens
- any article that a member of staff reasonably suspects has been, or is likely to be, used to commit an offence, or
- to cause personal injury to, or damage to the property of, any person (including the pupil)

(7) Medication

No medication should be brought into school except named emergency adrenaline pens and/or inhalers. If your child requires medication during the school day, please contact the School Nurse to discuss on schoolnurses@churcherscollege.com.

(8) Valuables and Property

Pupils are advised to bring the absolute minimum of valuables or money to school. No electronic equipment is to be brought to school, with the exception of mobile phones (see 12) and laptops (for 1st to 5th Years, prior authorisation from the Head of Curriculum Support is required).

No valuables or money must be left in the changing rooms during PE/Games or after school activities, but must be handed in to the teacher in charge for safe-keeping.

Property lost or found and all breakages must immediately be reported to a member of staff.

Please make sure that pupils' possessions are properly named. It is a parental responsibility to insure against loss or damage of personal effects.

School property and other pupils' property must be treated with respect at all times. No pupil shall be in possession of other pupils' property or books without the permission of a member of the staff.

(9) Games Equipment

All kit must be clearly marked with names. After PE/Games, kit and sports bags should be taken home and not left in school. Kit should be washed regularly. Parents should check kit weekly. Hockey sticks, cricket bats and tennis racquets must be named and should only be brought to school on days when there is an official practice, Games lesson or match.

(10) Signing In/Out

Written parental permission must be given to the Form Tutor, Head of House, Deputy Head(s) or Headmaster (or School Nurse in the case of illness) for any pupil who has to leave the premises before the end of the school day (apart from Sixth Form, who are permitted to leave the premises during the school day in accordance with the rules contained in the Sixth Form Handbook). Pupils must sign out at the School Office. If they return before the end of the school day, they must sign back in. Prior written notification, in the form of an email from parents to absence@churcherscollege.com, copied to the Form Tutor, must be received for doctor's appointments, etc.

(11) Telephone

In an emergency, pupils can come to the School Office to use the telephone.

(12) Mobile Devices

Mobile phones (including smartphones) may be brought into school but must be switched off, not just on silent mode and, for 1st to 5th Year pupils, kept in pouches between 8.30am and 4.00pm. If a pupil forgets to bring their pouch to school, they will be required to leave their mobile phone at the School Office, for collection at the end of the school day. Pupils who contravene the school rules with regard to mobile devices will be sanctioned. In case of emergency, parents should contact the School Office.

Sixth Form students can use their mobile devices in the social areas of the Ramshill Sixth Form Centre, which is supervised by teaching staff during the hours of the school day.

(13) Messages for Pupils

To avoid interrupting lessons, messages can be given during registration at 8.30am or 1.10pm.

(14) Contact details

The school must be informed of any change of address, telephone numbers or email addresses at work or home. Contact details can be updated through the My Account area of My School Portal or notified to the School Office in writing. Please also notify the School Office, in writing, of any changes to family circumstances.

(15) Staff Briefing

Pupils should not enter the Donald Brooks Auditorium during staff briefing, which is held between 10.20am and 10.40am on Wednesday.

(16) Classroom Equipment

Pupils must not touch or tamper with any computer related equipment in the classrooms, or any other technical or scientific equipment in the classrooms.

(17) Attendance

All pupils must attend all scheduled lessons and/or activities unless permission is given otherwise. Pupils must attend Open Day on the final Saturday of the Summer Term.

SCHOOL UNIFORM

School uniform is to be worn by all pupils travelling to and from school, when representing the school and at formal school functions.

To access a copy of the Senior School Uniform Code, along with details of how to purchase items from Perry, our online uniform provider (<https://www.perryuniform.co.uk>) please refer to <https://www.churcherscollege.com/our-school/school-uniform>.

General rules and expectations for all pupils:

- Pupils should dress tidily and all clothing should be clean and in good repair
- All items of uniform and equipment must be clearly named
- For Games and PE, all pupils must wear the appropriate kit

APPEARANCE AND ACCESSORIES

Hair

- Hair must be neat and tidy at all times
- Length – hair must be no shorter than No. 4 and hair that is longer than on the collar at the back must be held securely off the face at all times
- Colour – artificial colouring is permitted but only if it is of a natural (and consistent) colour.
- Pupils must be clean shaven

Jewellery

- Wrist watches are permitted for all pupils
- Pupils may wear one pair of plain stud earrings in the conventional place on the earlobe
- For health and safety reasons, all jewellery and watches should be removed for Games/ PE. As such, we would suggest that pupils having their ears pierced only do so at the beginning of long holidays

Make-up

1st - 3rd Years: No make-up, including nail polish, is allowed.

4th- 5th Years: Discreet make-up, excluding nail polish, is allowed.

SIXTH FORM DRESS CODE

The Sixth Form at Churcher's does not have a uniform as such, but there is a dress code with which Sixth Form students are required to comply.

The Sixth Form dress code requires a conservative, business-like appearance which will provide an appropriate role model for younger pupils. Extremes of fashion should be avoided.

Full details of the dress code are contained in the Sixth Form Uniform Policy which can be accessed at <https://www.churcherscollege.com/our-school/school-uniform>.

LOST PROPERTY: THE POUND

This is situated opposite the side entrance to the Sports Hall. The Pound is open Monday to Friday between 12.15pm and 12.45pm. All items of clothing and possessions should be named to help with the safe and quick return of lost property.

CAPTAINS AND DEPUTY CAPTAINS OF COLLEGE

GIRLS

Madeleine Gay
Sophia Farmer

BOYS

Max Cropley
Toby Medley

VICE CAPTAINS OF COLLEGE

COLLINGWOOD

Scott Adams
Grace Clark
Alfie Greggs
Marianna Houghton
Tristan Lewis
Jessica McCulloch
Theo Thomas
Jasmine Tilney
Amelia Virtue

NELSON

Rosie Bruce
Poppy Kilpatrick
Sophia Lane
Jessica Lin
Lucas Pescud
William Philpott

DRAKE

Camilla Cregeen
Annie Finbow
Oliver Hambly
Luke Hollis
Archibald McCreadie
William McIntyre

GRENVILLE

Bella Gaunt
Ben Hegan
Lauren Hill
Matilda Hill
Kitty Hogg
Georgia Meredith
Phoebe Pyke
Alice Stratton-Brown
Katherine Syson
Isaac Wetzel
Oliver Williams

RODNEY

Esme Budge
William Greasley
Jacob Hegarty
Amelie Morris
Lexie Oliver

HOUSE CAPTAINS

COLLINGWOOD

Captains:

Marianna Houghton
Jasmine Tilney
Alfie Greggs

Vice Captains:

Grace Clark
Tristan Lewis
Theo Thomas

NELSON

Captains:

Poppy Kilpatrick
Lucas Pescud

Vice Captains:

Rose Bruce
Charlotte Carmichael
Thomas Le Marchant
Alexander Way

DRAKE

Captains:

Camilla Cregeen
Annie Finbow
William McIntyre

Vice Captains:

Millie Packard
Annabel Steven
Olly Hambly
Luke Hollis
Archie McCreadie

GRENVILLE

Captains:

Phoebe Dallyn
Elise Millington
Oliver Williams

Vice Captains:

Georgia Meredith
Phoebe Pyke
Katherine Syson

RODNEY

Captains:

Lucy Thomas
William Nellist
Vice Captains:
Jasmine Johnson
Amelie Morris
Jacob Hegarty
Joshua Pearce

THE COMBINED CADET FORCE

Contingent Senior Cadet

RN Section: Leading Cadet

Army Section: Leading Cadet

RAF Section: Leading Cadet

Warrant Officer First Class Alfie Greggs

Warrant Officer Second Class Henry Murphy

Company Sergeant Major Toby Medley

Flight Sergeant Jessica Tomalin

COMBINED CADET FORCE – STAFF

Major D J Nighy, Contingent Commander

Lt. R Maier, i/c RN Section

Captain S Gibbins, i/c Army Section

Flight Lt. L Barton i/c RAF Section

School Staff Instructor (SSI) Finn Hughes

dnighy@churcherscollege.com;

rmaier@churcherscollege.com

sgibbins@churcherscollege.com

lbarton@churcherscollege.com

fhughes@churcherscollege.com

MUSIC LEADERS

Leaders of the College Orchestra

Leader of the Senior Wind Band

Leader of the Jazz Band

Senior Chorister

Clement Siu

Tristan Lewis

Lucas Pescud

Max Cropley

SPORTS CAPTAINS

Captain of Boys' Rugby

Captain of Boys' Hockey

Captain of Boys' Cricket

Captain of Girls' Hockey

Captain of Girls' Netball

Captain of Girls' Cricket

Archie Rushin

Ben Hegan

Toby Restell

Poppy Kilpatrick

Grace Clark

Lexie Oliver

Captains of Tennis

Captains of Swimming

Captain of Waterpolo

Theodore Shaw & Holly McLaughlin

Isabella Liedtke & Kitty Hogg

Henry Murphy

DAILY ROUTINE

Registration:	08.30 – 08.35 am
PSHE, Form Time or Assemblies:	08.35 – 09.00 am
Period 1	09.00 – 09.40 am
Period 2	09.40 – 10.20 am
BREAK	10.20 – 10.40 am
Period 3	10.40 – 11.20 am
Period 4	11.20 – 12.00 pm
LUNCH	12.00 – 13.10 pm
Period 5(to include registration)	13.10 – 13.50 pm
Period 6	13.50 – 14.30 pm
BREAK	14.30 – 14.40 pm
Period 7	14.40 – 15.20 pm
Period 8	15.20 – 16.00 pm



**CHURCHER'S
COLLEGE**

SUMMER 2025 CALENDAR



SUMMER 2025 CALENDAR

April**Mon 28****TERM COMMENCES***GCSE Speaking Exams* (Rooms 11, 12, 13, 15, 16)*L6th Internal Exams begin* (Sports Hall)

16:15

Staff Meeting (Donald Brooks Auditorium)

Tues 29*GCSE Speaking Exams* (Rooms 11, 12, 13, 15, 16)

16:15

Boys' Tennis School Sports Magazine Cup v Winchester College U14A (H)

16:15

CCF Leaders & NCOs Planning Meetings

16:30

CCALS Lecture: 'Reaching for the Summit' by Tom Livingstone (Donald Brooks Auditorium)

18:30

1st YEAR PARENTS' ACADEMIC INFORMATION EVENING
(Remote)**Wed 30***GCSE Speaking Exams* (Rooms 11, 12, 13, 15, 16)

13:00

(depart 12:00) Girls' Tennis LTA Aberdare Cup v Peter Symonds' College U18A

15:30

Girls' Tennis v St Swithun's School U18B, U18C (A)

14:30

Boys' Cricket v Kingston Grammar School 1st XI (H)

17:00

*Girls' Cricket National Schools Cup v Lord Wandsworth College 1st XI (A)***May****Thur 1***A Level Speaking Exams* (Cockerill Rooms R75, R76)*GCSE Physical Education Moderation* (Conference Room)

14:40

Junior Maths Challenge for selected 1st & 2nd Year pupils (periods 7 & 8) (Goodfield / Donald Brooks Auditorium)

16:15

Boys' Cricket National Schools Cup v Barton Peveril College 1st XI (H)

19:00

DEVIZES TO WESTMINSTER DINNER & PRESENTATION EVENING (Assembly Hall)

Fri 2

A Level Art Exam

L6th Internal Exams end (Sports Hall)

09:00

5th Year Trip (Thorpe Park)

16:00

5th Year Study Leave begins

Sat 3

09:00

Boys & Girls' Tennis v Seaford College U18A, U15A, U15B, U14A (A)

09:00

Boys & Girls' Tennis v Seaford College U13A, U12A (H)

09:30

Girls' Cricket v Portsmouth Grammar School U15A (H)

09:30

Girls' Cricket v Portsmouth Grammar School U13A, U13B (H)

09:30

Girls' Cricket Churcher's Development League U13 (H)

09:30

Girls' Cricket v Portsmouth Grammar School U12A, U12B (A - Hilsea)

12:00

Girls' Cricket Churcher's Development League U12 (H)

13:00

Girls' Cricket v Portsmouth Grammar School 1st XI (A - Hilsea)

13:00

Girls' Cricket Churcher's Development League U14 (H - Penns Place)

09:30

Boys' Cricket v Portsmouth Grammar School 2nd XI (H - Petersfield Cricket Club)

09:30

Boys' Cricket v Portsmouth Grammar School U15A, U15B (H - Penns Place)

09:30

Boys' Cricket v Portsmouth Grammar School U13A, U13B (A - Farlington)

09:30

Boys' Cricket v Portsmouth Grammar School U12A, U12B (A - Hilsea)

09:30

Boys' Cricket Churcher's Development League U12 (H)

12:00

Boys' Cricket Churcher's Development League U13 (H)

13:00

Boys' Cricket v Portsmouth Grammar School 1st XI (H)

13:00

Boys' Cricket v Portsmouth Grammar School U14B (H - Penns Place)

13:30

Boys' Cricket v Portsmouth Grammar School U14A (A - Hilsea)

Sun 4

08:00

OSCA Watercraft Day - Group A (Cobnor Activities Centre)

Mon 5**BANK HOLIDAY****Tues 6***A Level Art Exam*

12:20 Biological Society Meeting (Lecture Theatre)

12:30 School Council Handover Meeting (Room 310)

15:00 **Girls' Cricket Hampshire Cup v Farnborough Hill U15A (H)**

15:00 Boys & Girls' Tennis LTA Cup v The Petersfield School U15 (H)

16:15 CCF First Parade

17:00 **Girls' Cricket Hampshire Cup v St Swithun's School U13A (A)**19:15 **SIXTH FORM PREVIEW EVENING FOR 4th YEAR PUPILS & PARENTS** (Sports Hall)**Wed 7***A Level Art Exam**A Level Speaking Exams* (Cockerill Rooms R75, R76)*L6th A Level Drama Component 1 Practical Exam* (Studio 45)am *Edexcel Award Level 2 & Level 3 Algebra Exams*11:30 **Boys' Cricket v Marylebone Cricket Club 1st XI (H)**

13:10 U6th Enrich Lecture 'Gambling, Gaming and Mental Health' by Patrick Foster (Donald Brooks Auditorium)

19:00 **THE GRILL LECTURE - KATE MOSSE** (Sports Hall)**Thur 8***4th Year GCSE Drama Component 1 Practical Exam* (Studio 45)am *GCSE Drama Exam*

12:30 Sixth Form Committee Meeting (Garden Room)

pm *GCSE German Listening & Reading Exams*

16:00 GCSE & A Level Drama Lighting Design Workshop (Studio 45)

16:10 Boys & Girls' Swimming Gala v Wellington College U16, U15 (H)

19:30 **U6th MUSICIANS' DINNER** (Donald Brooks Auditorium)**Fri 9**

06:00 4th Year & L6th Ten Tors Teams depart (Dartmoor)

am *GCSE Latin Exam Paper 1*pm *GCSE Business Exam Paper 1*

Fri 9 (Continued)

13:10	U6th Study Leave begins
16:15	Boys' Cricket Churcher's Development League 2nd XI, U15B (H - Penns Place)

Sat 10

09:00	Girls' Tennis v Westbourne House School U13A, U13B, U12A, U12B (A)
09:30	Girls' Cricket v Ryde School 1st XI, U12A, U12B (H)
09:30	Girls' Cricket v Ryde School U15A (H - Petersfield Cricket Club)
09:30	Girls' Cricket v Ryde School U13A, U13B (H - Penns Place)
12:30	Girls' Cricket Churcher's Development League U13, U12 (H)
13:00	Girls' Cricket v Ryde School U14A, U14B (H)
09:30	Boys' Cricket v Ryde School 1st XI (A - Newclose)
09:30	Boys' Cricket v Ryde School U15A, U13A, U13B (A)
09:30	Boys' Cricket v Ryde School U12A, U12B (H)
12:30	Boys' Cricket Churcher's Development League U13, U12 (H)
13:00	Boys' Cricket v Ryde School U14A, U14B (H - Penns Place)
10:00	Boys & Girls' Tennis v Pangbourne College U18A, U18B (H)
10:00	Boys & Girls' Tennis v Pangbourne College U14A, U14B (A)
10:30	Boys' Tennis v Westbourne House School U13A, U13B, U12A, U12B, U12C (A)
12:00	Boys & Girls' Tennis v Pangbourne College U15A, U15B (H)
12:30	Old Churcherians' Reunion Lunch (Dining Hall & Donald Brooks Auditorium)

Sun 11

	L6th Prefects Training Day (all day)
08:00	OSCA Watercraft Day - Group B (Cobnor Activites Centre)
10:00	Shakespeare in the Park Rehearsals (Assembly Hall)
22:00	4th Year & L6th Ten Tors Teams return (Dartmoor)

Mon 12

	2nd Year HPV Vaccinations (Gym)
08:00	L6th History Trip (Cabinet War Rooms & Imperial War Museum)
am	IGCSE English Literature Exam
am	A Level Economics Exam Paper 1
pm	GCSE Computer Science Exam Paper 1
14:45	Boys & Girls' Tennis LTA Cup v Perins School U13A (H)
16:15	Girls' Tennis School Sports Magazine Cup v Farnborough Hill U14A (H)
16:15	Academic Review Group Meeting (Lecture Theatre)
19:30	PA COMMITTEE MEETING (The Dixon Room)

Tues 13

07:30	L6th Sports Science Trip (Cardiff Metropolitan University)
09:00	Drama Showcase Technical Rehearsal (Donald Brooks Auditorium)
am	GCSE Religious Studies Exam Paper 1
am	A Level Geography Exam Paper 1
pm	GCSE Biology Exam Paper 1
pm	GCSE Combined Science Biology Exam Paper 1
14:15	OPEN AFTERNOON (Donald Brooks Auditorium)
14:45	Boys & Girls' Tennis LTA Cup v Bohunt School U15A (H)
15:30	Boys & Girls' HSAA Track Championships Round 1 U14, U13
16:00	2nd Year Drake House Bowling Trip (Guildford Spectrum Centre)

Wed 14

am	GCSE Geography Exam Paper 1
am	AS Music Technology Exam Paper 3
am	A Level Business Exam Paper 1
10:00	(depart 09:00) Boys & Girls' ESAA Track & Field Championships Round 1 U15, U14 (A - Mountbatten Centre)
pm	GCSE Classical Greek Exam Paper 1
pm	A Level English Literature Exam Paper 1
14:00	Girls' Tennis v Tormead School U18A (H)
18:00	L6th Internal Exam Results & UCAS Guidance Grades to IGK
19:00	DRAMA SHOWCASE (Donald Brooks Auditorium)

Thur 15

	<i>L6th Art Exam</i>
am	<i>IGCSE Mathematics Exam Paper 1</i>
pm	<i>GCSE German Writing Exam</i>
15:30	Boys & Girls' HSAA Track Round 1 U12
16:10	Mixed Internal Water Polo Competition U15
18:00	Staff Cricket v Izaak Lions (H)
18:30	TEN TORS PRESENTATION EVENING (Donald Brooks Auditorium)

Fri 16

	<i>Non-Uniform Day (Wear Something Pink) for Shooting Star Children's Hospices</i>
	<i>L6th Art Exam</i>
am	<i>IGCSE History Exam Paper 1</i>
am	<i>A Level Psychology Exam Paper 1</i>
12:00	CHURCHER'S GOLF DAY (Petersfield Golf Club)
pm	<i>GCSE Business Exam Paper 2</i>
pm	<i>GCSE Latin Exam Paper 3</i>
17:30	Girls' Cricket v King Edward's Southampton 1st XI (A - Wellington)
17:30	Boys' Cricket v King Edward's Southampton 1st XI, 2nd XI (A - Wellington)
18:00	<i>1st, 2nd, 3rd, 4th Year & L6th Interim Reports to Tutors</i>

Sat 17

08:00	<i>L6th Biology Residential Field Trip departs (Slapton, Devon)</i>
09:00	Boys & Girls' Play Your Way to Wimbledon Doubles Tennis Tournament - All Years (H)
09:30	Girls' Cricket v King Edward's Southampton U14A, U14B, U12A, U12B (A - Wellington)
09:30	Girls' Cricket v King Edward's Southampton U13A, U13B (H)
13:00	Girls' Cricket Churcher's Development League U13, U12 (H)
13:30	Girls' Cricket v King Edward's Southampton U15A (H)
09:30	Boys' Cricket v King Edward's Southampton U13A, U13B (H - Penns Place)
09:30	Boys' Cricket v King Edward's Southampton U12A, U12B (H)

Sat 17 (Continued)

09:30	Boys' Cricket Churcher's Development League U12 (H)
13:00	Boys' Cricket v King Edward's Southampton U15A, U15B (H - Penns Place)
13:00	Boys' Cricket Churcher's Development League U13 (H)
13:00	Boys & Girls' Play Your Way to Wimbledon Singles Tennis Tournament U14, U13, U12 (H)
13:30	Boys' Cricket v King Edward's Southampton U14A, U14B (A - Wellington)

Sun 18

10:00	Shakers Rehearsal (Studio 45)
-------	-------------------------------

Mon 19

am	GCSE Chemistry Exam Paper 1
am	GCSE Combined Science Chemistry Exam Paper 1
pm	GCSE Physical Education Exam Paper 1
pm	A Level Economics Exam Paper 2
16:15	Digital Strategy Meeting (Conference Room)
21:00	L6th Biology Residential Field Trip returns (Slapton, Devon)

Tues 20

	L6th Psychology Brain Day with Dr Guy Sutton (Lecture Theatre)
	1st - 4th Year Internal Exams begin
am	A Level Ancient History Exam Paper 11
am	A Level Business Exam Paper 2
am	A Level German Exam Paper 1
pm	GCSE Classical Civilisation Exam Paper 11
pm	GCSE Computer Science Exam Paper 2
pm	A Level Further Mathematics Exam Paper 1
pm	A Level Latin Exam Paper 1
pm	A Level Politics Exam Paper 1

Wed 21

am	GCSE French Listening & Reading Exams
am	A Level Psychology Exam Paper 2
13:00	Antonin Artaud Drama Workshop for 4th Year & L6th Drama students with Initiate Theatre (Assembly Hall)
pm	GCSE Religious Studies Exam Paper 2
16:15	Pastoral Team Twilight Training with Karl Hopwood (Room 311)
19:00	WELLBEING MATTERS PARENTS' SEMINAR 'GROWING UP IN A DIGITAL WORLD' BY KARL HOPWOOD, INDEPENDENT ONLINE SAFETY EXPERT (Donald Brooks Auditorium)

Thur 22

am	GCSE Physics Exam Paper 1
am	GCSE Combined Science Physics Exam Paper 1
am	A Level English Literature Exam Paper 2
pm	GCSE Classical Greek Exam Paper 2
pm	A Level Further Mathematics Exam Paper 2
pm	A Level Geography Exam Paper 2

Thur 22 (Continued)

17:30 **L6th PARENTS' EVENING** (New College, Buttle Science Building, Assembly Hall & Library)

Fri 23

am *IGCSE English Language Exam*
am *AS Music Technology Exam Paper 4*
am *A Level History Exam Paper Y318*
am *A Level Physical Education Exam Paper 1*
am *A Level Physics Exam Paper 1*
16:00 **HALF TERM COMMENCES**

Sat 24 HALF TERM

Sun 25 HALF TERM

Mon 26 HALF TERM

06:00 L6th Gold DofE Canoeing Assessed Expedition departs (River Wye)
08:00 L6th Gold DofE Hiking Assessed Expedition departs (Lake District)

Tue 27 HALF TERM

Wed 28 HALF TERM

Thur 29 HALF TERM

Fri 30 HALF TERM

22:00 L6th Gold DofE Canoeing Assessed Expedition returns (River Wye)
23:00 L6th Gold DofE Hiking Assessed Expedition returns (Lake District)

Sat 31 HALF TERM

June

Sun 1 HALF TERM

Mon 2**TERM RECOMMENCES**

	L6th Futures Conference (Donald Brooks Auditorium)
am	GCSE Classical Civilisation Exam Paper 21
am	A Level Design & Technology Exam Paper 1
am	A Level Drama & Theatre Exam
am	A Level Latin Exam Paper 2
12:15	Staff Forum Meeting (Lecture Theatre)
pm	GCSE Classical Greek Exam Paper 5
pm	A Level Ancient History Exam Paper 21
15:30	Boys & Girls' HSAA Track Championships Semi-Final U14, U13
16:15	Staff Meeting (Donald Brooks Auditorium)
19:00	L6th PARENTS' INTRODUCTION TO THE UCAS PROCESS (Donald Brooks Auditorium)

Tues 3

	L6th Futures Conference (Donald Brooks Auditorium)
am	GCSE Latin Exam Paper 4
am	GCSE Russian Listening & Reading Exams
am	A Level Spanish Exam Paper 1
15:30	Boys & Girls' HSAA Track Championships Semi-Final U12

Wed 4

	1st - 4th Year Internal Exams end
am	IGCSE Mathematics Exam Paper 2
am	A Level Physical Education Exam Paper 2
pm	A Level Mathematics Exam Paper 1
13:10	Heads of Department Training Afternoon (Donald Brooks Auditorium)
14:40	1st Year End of Internal Exams Trip (Flip Out, Chichester)
16:15	Boys' Tennis LTA Cup v Bedales U15 (H)
16:15	Health, Safety & Welfare Committee Meeting (Conference Room)

Thur 5

08:30	4th Year Classics Trip (British Museum, London)
08:30	Govenors' & SMT Away Day (Old Thorns, Liphook)
08:35	Extended 2nd Year Assembly: First Challenge Expedition Summer 2026 Launch (Lecture Theatre)

Thur 5 (Continued)

am	IGCSE History Exam Paper 2
am	A Level Economics Exam Paper 3
12:10	Career Bites' Lecture Series: 'An Insight into the Role of Magistrates and the Magistrates' Court' (Lecture Theatre)
12:30	Sixth Form Committee Meeting (Garden Room)
pm	GCSE French Writing Exam
pm	A Level Biology Exam Paper 1
pm	A Level Politics Exam Paper 2
13:10	L6th Geography Field Trip departs (Nettlecombe Court, Somerset)
16:40	Girls' Tennis v St Swithun's School U12A, U12B (A)
18:00	OC London Drinks (The Conductor, London EC4)

Fri 6**PERRY POP-UP UNIFORM EVENT** (Pavilion)

08:30	Analyst Competition for L6th Chemistry students (morning only) (Rooms 304 & 305)
am	A Level French Exam Paper 1
am	A Level Geography Exam Paper 3
12:30	1722 Society Summer Lunch (Assembly Hall)
pm	GCSE Geography Exam Paper 2
pm	A Level Further Mathematics Exam Mechanics Paper 1
pm	A Level History Exam Paper Y113
13:10	4th Year Art Exam (periods 5 - 8)
17:30	Girls' Cricket v Lord Wandsworth College 1st XI (A)
17:30	Boys' Cricket v Lord Wandsworth College 1st XI, 2nd XI (A)

Sat 7**PERRY POP-UP UNIFORM EVENT** (Donald Brooks Auditorium)

09:30	Girls' Cricket Churcher's Development League U13, U12 (H)
10:00	Girls' Tennis v St Swithun's School U15A, U15B, U14A, U14B (A)
13:00	Girls' Cricket v Lord Wandsworth College U15A (H - Penns Place)
13:00	Girls' Cricket v Lord Wandsworth College U14A, U14B, U13A, U13B (A)
13:00	Girls' Cricket v Lord Wandsworth College U12A, U12B (H)

Sat 7 (Continued)

09:30	Boys' Cricket Churcher's Development League U13. U12 (H)
10:00	Boys & Girls' Tennis v Amesbury School U13A, U12A (H)
13:00	Boys' Tennis v Lord Wandsworth College U18A, U15A, U14A (H)
13:00	Boys' Cricket v Lord Wandsworth College U15A, U12A, U12B (H)
13:00	Boys' Cricket v Lord Wandsworth College U15B (H - Penns Place)
13:00	Boys' Cricket v Lord Wandsworth College U14A, U14B, U13A, U13B (A)

Sun 8

10:00	Shakespeare in the Park Rehearsals (Donald Brooks Auditorium)
-------	---------------------------------------------------------------

Mon 9

	1st Year Trip to the Hawk Conservancy Trust (Weyhill, Andover)
	2nd Year STEAM Olympics begins
07:45	Magistrates Court Visit for selected 4th Year pupils (return 13:00)(Portsmouth Magistrates' Court)
08:30	OSCA Expedition Group 1 departs (Brenscombe Outdoor Centre, Dorset)
am	<i>GCSE Biology Exam Paper 2</i>
am	<i>GCSE Combined Science Biology Exam Paper 2</i>
am	<i>A Level German Exam Paper 2</i>
am	<i>A Level Physics Exam Paper 2</i>
am	<i>A Level Psychology Exam Paper 3</i>
12:15	School Council 3rd Year Football Tournament Round 1 (Nicholson's Field)
12:30	SMT with Caretaking (Conference Room)
pm	<i>GCSE Physical Education Exam Paper 2</i>
pm	<i>A Level Business Exam Paper 3</i>
pm	<i>A Level Latin Exam Paper 3</i>
pm	<i>A Level Music Exam</i>
16:00	3rd Year & L6th CCF Army Exercise Night Owl departs (Longmoor)
17:00	L6th Geography Field Trip returns (Nettlecombe Court, Somerset)
18:00	Governors' Management Committee Meeting (Conference Room)

Tues 10

	CCF Field Day
am	<i>A Level Chemistry Exam Paper 1</i>
am	<i>A Level Design and Technology Exam Paper 2</i>
am	<i>A Level Politics Exam Paper 3B</i>
am	<i>GCSE Spanish Listening & Reading Exams</i>
pm	<i>A Level Religious Studies Exam Paper 1</i>
14:00	3rd Year & L6th CCF Army Exercise Night Owl returns (Longmoor)
18:00	<i>1st - 4th Year Internal Exam Results to IGK</i>

Wed 11

	EFAW 1-Day First Aid Course for Staff (Garden Room)
	1st Year Geography Field Trip (Penns Place)
	L6th Chemistry Trip (ZeroAvia, Cirencester)
08:30	OSCA Expedition Group 2 departs (Brenscombe Outdoor Centre, Dorset)
am	<i>Intermediate Certificate in Classical Greek Exam</i>
am	<i>A Level Computer Science Exam Paper 1A</i>
am	<i>A Level Spanish Exam Paper 2</i>
15:00	Former Staff Tea (Pavilion)
16:00	3rd & 4th Year Collingwood House Waterpark Trip (Chichester Watersports)
16:15	Digital Strategy Group Meeting (Conference Room)
18:30	OSCA Expedition Group 1 returns (Brenscombe Outdoor Centre, Dorset)

Thur 12

09:00	4th Year Geography Field Trip (Highcliffe, Dorset)
am	<i>GCSE Geography Exam Paper 3</i>
am	<i>A Level History Exam Paper Y213</i>
10:15	OPEN MORNING (Donald Brooks Auditorium)
pm	<i>GCSE Russian Writing Exam</i>
pm	<i>AQA Certificate Level 2 Further Mathematics Exam Paper 1</i>
pm	<i>A Level Mathematics Exam Paper 2</i>
16:10	Boys & Girls' Swimming Gala v The Petersfield School U12 (H)

Fri 13

	2nd Year STEAM Olympics ends
am	<i>GCSE Chemistry Exam Paper 2</i>
am	<i>GCSE Combined Science Chemistry Exam Paper 2</i>
am	<i>A Level Biology Exam Paper 2</i>
09:30	CCJS Year 5 French Breakfast (Dining Hall)
pm	<i>A Level Further Mathematics Exam Statistics Paper 1</i>
13:10	3rd Year CAS Path Building Project (The Serpent Trail)
17:30	Girls' Cricket v St John's School, Leatherhead 1st XI (H)
17:30	Boys' Cricket v St John's School, Leatherhead 1st XI, 2nd XI (A)
18:30	OSCA Expedition Group 2 returns (Brenscombe Outdoor Centre, Dorset)

Sat 14**Petersfield Jazz Festival**

- 09:30 Girls' Cricket v St John's School, Leatherhead U13A, U13B (A)
09:30 Girls' Cricket v St John's School, Leatherhead U12A (H - Penns Place)
09:30 Girls' Cricket v St John's School, Leatherhead U12B (H)
12:30 Girls' Cricket Churcher's Development League U13, U12 (H)
13:30 Girls' Cricket v St John's School, Leatherhead U15A (A)
13:30 Girls' Cricket v St John's School, Leatherhead U14A (H - Penns Place)
13:30 Girls' Cricket v St John's School, Leatherhead U14B (H)
09:30 Boys' Cricket v St John's School, Leatherhead U13A, U13B (A)
09:30 Boys' Cricket v St John's School, Leatherhead U12A (H)
09:30 Boys' Cricket v St John's School, Leatherhead U12B (H - Penns Place)
10:00 Boys & Girls' HSAA Track and Field Championships U18, U16, U15, U14 (A- Mountbatten Centre)
10:00 Boys & Girls' Tennis v Gordon's School U18A (H)
12:30 Boys' Cricket Churcher's Development League U13, U12 (H)
13:00 Boys & Girls' Tennis v St John's School, Leatherhead U13A, U13B, U13C (A)
13:00 Boys & Girls' Tennis v St John's School, Leatherhead U12A, U12B, U12C (H)
13:30 Boys' Cricket v St John's School, Leatherhead U15A, U15B (A)
13:30 Boys' Cricket v St John's School, Leatherhead U14A (H)
13:30 Boys' Cricket v St John's School, Leatherhead U14B (H - Penns Place)

Sun 15

- 10:00 Shakespeare in the Park Technical Rehearsal

Mon 16

09:00	3rd Year STEAM & Self Defence Day (Gym / Headmaster's Lawn Marquee)
am	GCSE Physics Exam Paper 2
am	GCSE Combined Science Physics Exam Paper 2
am	A Level Chemistry Exam Paper 2
am	A Level French Exam Paper 2
pm	GCSE Music Exam
pm	A Level Latin Exam Paper 4
13:10	2nd Year Sports Day (periods 5 - 8)
16:15	Academic Review Group Meeting (Lecture Theatre)
16:15	SINGER/SONGWRITER COMPETITION (Donald Brooks Auditorium)
16:30	Boys' Cricket v Hampshire County U14A (H)
18:00	3rd Year Subject Reports to Tutors
18:00	2nd & 3rd YEAR ACADEMY EXHIBITION (Assembly Hall)

Tues 17

	EFAW 1-Day First Aid Course for Staff (Garden Room)
	Associated Board Music Exams (Music School)
08:30	Collingwood House 'Silence Speaks' Charity Fundraising Morning for MND
09:00	Shakespeare in the Park Dress Rehearsal
am	GCSE Spanish Writing Exam
am	A Level Physics Exam Paper 3
10:40	5th Year Book Return (period 3) (Gym)
pm	FSMQ Additional Maths Exam
pm	A Level Religious Studies Exam Paper 2
13:10	1st Year House STEAM Challenge (periods 5 & 6) (Goodfield)
13:10	4th Year Sports Day (periods 5-8)
16:30	Boys' Cricket v Hampshire County U13A (H)
16:40	Girls' Tennis v St Swithun's School U13A, U13B, U13C (A)
19:00	(depart 16:15) 3rd Year Cricket Trip to Hampshire v Surrey in the T20 Blast (The Utilita Bowl, Southampton)
19:00	SHAKESPEARE IN THE PARK - THE TEMPEST

Wed 18

L6th CAS Path Building Project (The Serpent Trail)
Associated Board Music Exams (Music School)

11+ INDUCTION DAY

- 08:30 School Council 2nd Year Forum (Conference Room)
am *GCSE Design & Technology Exam*
am *A Level Biology Exam Paper 3*
am *A Level Computer Science Exam Paper 2*
pm *AQA Certificate Level 2 Further Mathematics Exam Paper 2*
16:15 Calendar Committee Meeting (Room 311)
16:15 Collingwood House BBQ
19:00 **FIRST CHALLENGE EXPEDITION SUMMER 2026 LAUNCH TO PARENTS** (Remote)
19:00 **SHAKESPEARE IN THE PARK - THE TEMPEST**

Thur 19

LAMDA Examinations (Assembly Hall, Conference Room & Studio 45)

- 08:30 1st Year History Trip (Hampton Court)
09:00 GCSE & A Level Design & Technology Showcase Exhibition
Get-In begins (Donald Brooks Auditorium)
12:30 School Council Meeting (Room 310)
pm *A Level Mathematics Exam Paper 3*
16:15 SMT with Catering (Conference Room)
17:30 **1st YEAR PARENTS' EVENING** (Remote)

Fri 20

LAMDA Examinations (Assembly Hall, Conference Room & Studio 45)

- am *A Level Chemistry Exam Paper 3*
am *A Level Religious Studies Exam Paper 3*
11:20 U6th Book Return (period 4) (Gym)
13:10 L6th Business Trip (RSM, Guildford)
13:10 3rd Year Sports Day (periods 5-8)
17:00 **GCSE & A LEVEL ART AND DESIGN & TECHNOLOGY SHOWCASE EXHIBITION** (Art School / Donald Brooks Auditorium)

Fri 20 (Continued)

18:00	<i>5th Year & U6th Final Reports to HMEA</i>
18:00	Staff Cricket v The Queen's Head (H)
20:30	Summer Solstice Dusk-till-Dawn Charity Walk begins (QECP)

Sat 21

07:00	Summer Solstice Dusk-till-Dawn Charity Walk ends (QECP)
07:30	CCF RAF Gliding (Upavon)
09:30	Girls' Cricket v Reigate Grammar School U15A, U13A (H - Penns Place)
09:30	Girls' Cricket v Reigate Grammar School U14A, U12A, U12B (A - Hartswood)
09:30	Girls' Cricket v Reigate Grammar School U14B, U13B (H)
10:00	Girls' Tennis v St John's School, Leatherhead U18A, U18B (H)
12:00	Girls' Tennis v St John's School, Leatherhead U15A, U15B (H)
09:30	Boys' Cricket v Reigate Grammar School 1st XI, U13B, U12B (H)
09:30	Boys' Cricket v Reigate Grammar School U15A (H - Petersfield Cricket Club)
09:30	Boys' Cricket v Reigate Grammar School U14A, U13A, U12A (A - Hartswood)
10:00	Boys & Girls' Tennis v St John's School, Leatherhead U18A, U18B (H)
10:00	Boys & Girls' Tennis v Oratory School U13A, U12A (A)
10:30	Boys & Girls' Tennis v St John's School, Leatherhead U14A, U14B, U14C (A)
12:00	Boys & Girls' Tennis v St John's School, Leatherhead U15A, U15B, U15C (H)
14:00	Boys' Cricket Internal Fixture U14B (H)
16:00	4th Year Silver DofE Practice Expedition departs (Isle of Purbeck, Dorset)
17:00	CCF RN Section Summer Camp Out begins (Penns Place)
18:30	THE SUMMER PARTY (Headmaster's Lawn)

Sun 22

	National Schools' RS Feva Sailing Championships (Itchenor Sailing Club)
09:00	CCF RN Section Summer Camp Out ends (Penns Place)
10:00	Shakers Rehearsal (Studio 45)

Mon 23

	National Schools' RS Feva Sailing Championships (Itchenor Sailing Club)
	LAMDA Examinations (Assembly Hall, Conference Room & Studio 45)
09:00	2nd Year Academy Trip (London)
12:15	School Council 3rd Year Football Tournament Round 2 (Nicholson's Field)
13:10	GCSE & A Level Design & Technology Showcase Exhibition
	Get-Out begins (Donald Brooks Auditorium)
16:15	Heads of House Internal Exams Results Analysis Meeting (Conference Room)
17:30	L6th Psychology: 'A Beautiful Mind' (The Living Room Cinema, Liphook)
18:00	3rd Year Tutor Reports to the Headmaster
18:00	2nd Year Subject Reports to Tutors
18:00	SSA CONCERT (Donald Brooks Auditorium)
20:00	4th Year Silver DofE Practice Expedition returns (Isle of Purbeck, Dorset)

Tues 24

	National Schools' RS Feva Sailing Championships (Itchenor Sailing Club)
	LAMDA Examinations (Assembly Hall, Conference Room & Studio 45)
	EFAW 1-Day First Aid Course for Staff (Garden Room)
	4th Year Invitation Day to Ramshill (Morning Break & Lunch)
10:30	(depart 09:00) L6th A Level Biology Conservation Conference (Marwell Zoo)
13:00	Chemistry Analysis Quest Event for selected 4th Year pupils (Rooms 304 & 305)
13:10	1st Year Sports Day (periods 5-8)
13:50	4th Year A Level Taster Lessons (periods 6-8)
16:15	CCF Final Parade & BBQ
19:00	DANCE & LAMDA SHOWCASE (Donald Brooks Auditorium)

Wed 25

National Schools' Firefly Sailing Championships (Itchenor Sailing Club)

LAMDA Examinations (Conference Room, Studio 45)

The Shakers Rehearsal (The Phoenix Arts Club, London)

16+ ORIENTATION DAY

09:00 Impact Gumshield Fitting (Gym)

12:30 School Council Meeting with the Headmaster (Room 310)

13:00 (depart 12:00) Boys & Girls' HSAA Track Championships Final U14, U13, U12 (A - Mountbatten Centre)

13:10 L6th Sports Day (periods 5-8)

16:00 4th Year Silver DofE Assessed Expedition Planning Meetings (Lecture Theatre & ICT Rooms)

16:15 Boys' Cricket v Bedales 1st XI (H)

19:00 5th Year Dinner (Lythe Hill Hotel, Haslemere)

Thur 26

SHAKERS PERFORMANCE (The Phoenix Arts Club, London)

National Schools' Firefly Sailing Championships (Itchenor Sailing Club)

EPQ Trip for selected L6th students (The British Library, London)

Ditcham Park Year 10 Sixth Form Taster Day

Grand Summer Concert Rehearsals (Music School)

'Engineers of the Future' Inter-Schools Outreach STEAM Challenge (Gym)

12+, 13+ & 14+ INDUCTION DAY

09:15 Governors' Full Board Meeting (Garden Room)

16:10 Mixed Water Polo Internal Competition U13

16:15 Colours Committee Meeting (Conference Room)

16:15 Girls' Cricket v Hampshire County U14A (H)

17:30 **4th YEAR PARENTS' EVENING** (Remote)

18:00 L6th UCAS Subject Paragraphs deadline

Fri 27

National Schools' Firefly Sailing Championships (Itchenor Sailing Club)

Fri 27 (Continued)

Grand Summer Concert Rehearsals (Music School)

10:30

CCJS YEAR 5 SWIMMING GALA

13:50

Lessons conclude for Open Day preparation

18:00

1st & 4th Year Interim Reports to Tutors

18:00

Staff Cricket v Gentlemen of Bedales (H)

Sat 28

09:00

Girls' Cricket Champions Challenge U18A

09:00

Parents & Pupils' Tennis Tournament

10:00

OPEN DAY (concludes 14:00)

10:00

Girls' Cricket Churcher's Development League U12

10:00

Boys' Water Polo v Old Churcherians U18

12:00

Boys' Cricket Churcher's Development League U12

13:00

Boys' Cricket v Old Churcherians 1st XI

13:00

Boys & Girls' Tennis Tournament v Old Churcherians U18

Sun 29

Mon 30

	Grand Summer Concert Rehearsals (Music School)
12:15	School Council 3rd Year Football Tournament Round 3 (Nicholson's Field)
14:00	2nd YEAR GRANDPARENTS' AFTERNOON (Sports Hall)
14:30	(depart 13:45) Gymnastics Club Training U12 (Portsmouth Gymnastics Centre)
14:40	3rd Year House STEAM Challenge (periods 7 & 8)(Goodfield)
16:10	Boys & Girls' SwimRun v Local Schools U14, U13, U12 (H)
18:00	<i>2nd Year Tutor Reports to the Headmaster</i>

July**Tues 1**

	Grand Summer Concert Rehearsals (New Theatre Royal, Portsmouth)
09:00	1st Year Maths Challenge (periods 1 & 2)(Sports Hall)
10:40	2nd Year Maths Challenge (periods 3 & 4)(Sports Hall)
13:10	3rd Year Maths Challenge (periods 5 & 6)(Sports Hall)
18:00	<i>1st & 4th Year Interim Reports Tutor Comments deadline</i>
19:00	GRAND SUMMER CONCERT (New Theatre Royal, Portsmouth)

Wed 2

	L6th New Designers Exhibition (Business Design Centre, Islington)
09:00	Lower School Prizegiving Rehearsals (periods 1 & 2) (Sports Hall)
10:40	Lower School Prizegiving Music Rehearsals (periods 3 & 4) (Sports Hall)
14:15	LOWER SCHOOL PRIZEGIVING (1st-3rd Year) (Sports Hall)
18:30	Sixth Form Ball (Old Thorns, Liphook)
19:00	U6th PARENTS' FAREWELL DRINKS (The Deers Hut, Liphook)

Thur 3

11:00	First Challenge Expedition to Montenegro Team 1 Build-Up Day
12:00	Whole School Charity Event

Thur 3 (Continued)

- 16:00 Orchestra Tour Rehearsal (Donald Brooks Auditorium)
19:00 **NEW PUPILS & PARENTS' SOCIAL EVENING** (Sports Hall)

Fri 4

- 12:00 First Challenge Expedition to Montenegro Team 1 departs
TERM ENDS

Sat 5

- 10:00 Boys & Girls' ESAA Track & Field Cup Final U15, U14, U13, U12 (A - Chelmsford)
13:00 Orchestra & Jazz Band Tour Rehearsal (Donald Brooks Auditorium)
15:00 **ORCHESTRA & JAZZ BAND TOUR CONCERT** (Donald Brooks Auditorium)

Sun 6

- CCF Army Summer Camp departs (Longmoor Training Camp)

DRAMA REHEARSALS/CLUBS

i/c Stacey Carty: scarty@churcherscollege.com
For LAMDA Lessons – please speak to your LAMDA teacher

Monday	Lunch 1	GCSE Support	Studio 45	SXC
	Lunch 2	Shakers Rehearsal	Studio 45	RN
	4pm	Shakers Rehearsal	Studio 45	SXC
	4pm	GCSE Support	Assembly Hall	RN
Tuesday	8.30am – 9am	Shakers Rehearsal	Assembly Hall	SXC
	Lunch 2	A Level Support	Studio 45	SXC
	Lunch 2	GCSE Support	Room 41	RN
	Lunch 2	KS3 Drama Club	Assembly Hall	NEC
Wednesday	8.30am-9am	Drama Showcase Rehearsal	Studio 45	SXC
	Lunch 1 & 2	Drama Department Meeting	Room 41	Drama Dept
	4pm	Shakers Rehearsal	Studio 45	SXC
	4pm	Shakespeare in the Park	DBA	NEC
Thursday	8.30am-9am	Miscellaneous Rehearsals	Studio 45	SXC
	Lunch 1	GCSE Support	Room 41	NEC
	Lunch 2	Musical Theatre Club (Lower School)	Assembly Hall	RN NEC
	Lunch 2	Backstage Club	Costume store/ Room 41	SXC
	4pm	GCSE Support	Studio 45	RN
	4pm	A Level Support	Room 41	SXC
	4pm	Shakespeare in the Park	Assembly Hall	NEC
Friday	8.30am-9am	Musical Theatre Club (Seniors)	Studio 45	SXC
	Lunch 2	Drama Showcase Rehearsal	Assembly Hall	SXC
	Lunch 2	GCSE Support	Room 41	RN

DUKE OF EDINBURGH EXPEDITION DATES

Bronze		
3rd Year Final Expedition Group A	New Forest	Saturday 5 April – Sunday 6 April 2025
3rd Year Final Expedition Group B	New Forest	Saturday 26 April – Sunday 27 April 2025
Silver		
4th Year Practice Expedition	Isle of Purbeck	Saturday 21 – Monday 23 June 2025
4th Year Final Expedition	Exmoor	Thursday 28 August – Monday 1 Sept 2025
Gold		
L6th Gold Hiking & Canoeing Final Expeditions	Lake District/ River Wye	Monday 26 May – Friday 30 May 2025

BOYS & GIRLS' CRICKET TRAINING TIMES

Head of Cricket: Mr Rob Maier
rmaier@churcherscollege.com

Team	Day	Time	Boys' Lead Coach	Girls' Lead Coach
Under 12s	Wednesday	16:00 – 17:15	Mr Jamie Daniel jamie.daniel@churcherscollege.com	Mrs Kelly Higgins khiggins@churcherscollege.com
Under 13s	Tuesday	16:00 – 17:15	Mr Toby Blong tblong@churcherscollege.com	Mrs Shelley Copland scopland@churcherscollege.com
Under 14s	Thursday	16:00 – 17:15	Mr Ben Skirving bskirving@churcherscollege.com	Mrs Laura Snowball lsnowball@churcherscollege.com
Under 15s	Monday	16:00 – 17:15	Mr Kevin Maguire kmauire@churcherscollege.com	Mr Martin Gibb mgibb@churcherscollege.com
Seniors	Friday	16:00 – 17:15	Mr Rob Maier rmaier@churcherscollege.com	Mrs Stacey Angliss sangliss@churcherscollege.com

BOYS & GIRLS' TENNIS TRAINING TIMES

Head of Tennis: Mrs Cat Wilcockson
cwilcockson@churcherscollege.com

Team	Day	Time	Lead Coach
Under 12s	Tuesday	16:00 – 17:00	Miss Annabel Sexton aseyton@churcherscollege.com
Under 13s	Tuesday	17:00 – 18:00	Mrs Cat Wilcockson cwilcockson@churcherscollege.com
Under 14s	Monday	16:00 – 17:15	Mr Rick West rawest@churcherscollege.com
Under 15s	Wednesday	16:00 – 17:00	Mr Matthew Kelly mkelly@churcherscollege.com
Seniors	Thursday	16:00 – 17:15	Mrs Tina Jenkins tjenkins@churcherscollege.com

ATHLETICS

Head of Athletics/X-Country: Kevin Maguire
kmauire@churcherscollege.com

Wednesday morning Cross country training continues with more of a track focus
and specific athletics training will take places during lunchtimes

SWIMMING TRAINING TIMES

Head of Swimming: Miss Stacey Angliss
sangliss@churcherscollege.com

Team	Day	Time
Competitive & Development Squads (all years)	Monday	16:00 – 17:15
Competitive & Development Squads (all years)	Tuesday am	07:00 – 08:00
Competitive & Development Squads (all years)	Tuesday pm	16:00 – 17:15
Competitive & Development Squads (all years)	Wednesday pm	16:00 – 17:15
Competitive & Development Squads (all years)	Thursday am	07:00 – 08:00
Competitive & Development Squads (all years)	Thursday pm	16:00 – 17:15

WATERPOLO PRACTICE TIMES

Head of Water Polo: Miss Stacey Angliss
sangliss@churcherscollege.com

Team	Day	Time
Beginner's Waterpolo	Monday	12:15 – 12:55
Intermediate Waterpolo	Tuesday	12:15 – 12:55
Experienced Waterpolo	Wednesday	12:15 – 12:55

DANCE

Lead coach: Miss Paige Elson
pelson@churcherscollege.com

Team	Day	Time	Venue
Beginner's Tap Dance Club (all years)	Monday	12:00 – 12:30	M47
Intermediate Dance (2nd years & up)	Monday	16:00 – 17:00	Auditorium
Latin & Ballroom Dance (all years)	Tuesday	16:00 – 17:00	Auditorium
Advanced Dance (3rd years & up)	Wednesday	12:25 – 13:00	Studio 45
Junior Dance Squad (1st – 3rd Years)	Thursday	16:00 – 17:15	Gym
Intermediate/Advanced Tap	Friday	12:30 – 13:00	M47

FUTURE EVENTS

JULY

Saturday	5	Boys & Girls' ESAA Track & Field Cup Final U15, U14, U13, U12
Saturday	5	Orchestra & Jazz Band Tour Rehearsal
Saturday	5	ORCHESTRA & JAZZ BAND TOUR CONCERT
Sunday	6	CCF Army Camp to Longmoor departs
Tuesday	8	Boys & Girls' HSAA Track & Field Championships U13, U12
Wednesday	9	Senior School Orchestra Tour to Barcelona departs
Wednesday	9	Senior Sports Tour to Cape Town/Johannesburg departs
Sunday	13	Senior School Orchestra Tour to Barcelona returns
Thursday	10	Route to Wimbledon Winners trip to Wimbledon
Friday	11	CCF Army Camp to Longmoor returns
Monday	14	First Challenge Expedition to Montenegro Team 1 returns
Tuesday	15	First Challenge Expedition to Montenegro Team 2 Build-Up Day
Wednesday	16	First Challenge Expedition to Montenegro Team 2 departs
Sunday	20	CCF RAF Summer Camp to Inskip departs
Monday	21	Senior Sports Tour to Cape Town/Johannesburg returns
Saturday	26	CCF RAF Summer Camp to Inskip returns
Saturday	26	First Challenge Expedition to Montenegro Team 2 returns

AUGUST

Thursday	14	A LEVEL RESULTS DAY
Thursday	21	GCSE RESULTS DAY
Thursday	28	4th Year Silver Duke of Edinburgh Qualifying Expedition to Exmoor departs
Sunday	31	4th Year Silver Duke of Edinburgh Qualifying Expedition to Exmoor returns

SEPTEMBER

Tuesday	2	Term Commences for 1st Year & L6th Students
Wednesday	3	TERM COMMENCES
Friday	5	Individual Pupil Photographs
Thursday	18	Senior Adventure Club to Snowdonia departs
Sunday	21	Senior Adventure Club to Snowdonia returns
Monday	22	L6th Induction Event
Monday	22	CAREERS & HIGHER EDUCATION EVENT
Friday	26	OSCA Rother Valley Trip departs
Saturday	27	OSCA Rother Valley Trip returns

FUTURE EVENTS *(continued)*

OCTOBER

Thurs 2 & Friday 3	1st Year Internal Teambuilding Days
Wednesday 8	6TH FORM OPEN EVENING
Tuesday 21	Trafalgar Night Dinner
Thursday 23	SENIOR SPEECH DAY
Thursday 23	HALF TERM COMMENCES
Friday 24	Gold DofE Hiking Canoeing Expedition Practice departs
Friday 24	Classics Trip to Bay of Naples departs
Friday 24	Spanish Language Trip to Barcelona departs
Monday 27	Spanish Language Trip to Barcelona returns
Monday 27	French Language Trip to Bordeaux departs
Tuesday 28	Classics Trip to Bay of Naples returns
Tuesday 28	Gold DofE Hiking Canoeing Expedition Practice returns
Friday 31	French Language Trip to Bordeaux returns

NOVEMBER

Monday 3	TERM RECOMMENCES
Sunday 9	REMEMBRANCE SUNDAY

DECEMBER

Friday 12	TERM ENDS
-----------	------------------

RECREATIONAL OPPORTUNITIES

Please see separate lists for Music, Drama & Sports Activities

Day	Time	Activity	Venue	Staff i/c	Start date
Daily	08:45 - 17:30	Private study & computer use	Library	TDG/CAH	28.04.25
	12:10 - 13:05	Brain Games (on request)	Library	TDG/CAH	28.04.25
	12:10 - 13:05	Puzzle Club	Library	TDG/CAH	28.04.25
	Various	LAMDA	Various	S Hall i/c	28.04.25
	12:15 - 12:45	Art Drop-in (all years) - Mon, Wed, Thur, Fri	C62	Various	28.04.25
	12:30 - 13:05	Maths Support Sessions Mon-Wed & Fri	G92	TLG	28.04.25
	Ad-hoc days	News Crew (all years)	Various	JS	as advised
Mon	12:00 - 12:30	Beginners Tap	M47	PSE	28.04.25
	12:00 - 13:00	Sixth Form Study Clinic	R46	MC	28.04.25
	12:00 - 13:00	6th Form Debating Society	R78	JPC	28.04.25
	12:10 - 12:40	Raspberry Pi Competition (selected 3rd years)	C64	AHS	28.04.25
	12:15 - 12:45	Charities Committee (all years) Ad-hoc, when advised	G52 (D&T)	ALS	
	12:15 - 13:00	2nd Year Gymnastics Club	Gym	CM	28.04.25
	12:15 - 13:10	Chess Club	Library	JS	28.04.25
	12:20 - 13:00	Eco Club	N18	TXO	28.04.25
	12:30 - 13:00	'Plot Twist' - Creative writing club	N10	CEU	28.04.25
	12:30 - 13:00	Model United Nations Club (2nd Year & above)	N3	KMC/HLB/ HJT	28.04.25
	16:00 - 17:00	Intermediate Dance (3rd - U6th)	Auditorium	PSE	28.04.25
	16:10 - 17:00	Cake Decorating Club (1st Year)	C62	AJC	t b a
	16:15 - 17:30	GCSE Art Support Session	Art Dept	ERM	28.04.25
	16:15 - 17:15	Greenpower electric vehicle club (all years)	D & T	SXM/MDU	28.04.25
	16:15 - 17:15	Fencing (chargeable club)	Gym	BDS i/c	28.04.25
	16:15 - 17:15	STEAMship (Sci/Eng) 2nd, 3rd, & 4th years	Room 301	HFY	28.04.25
Tues	12:10 - 12:50	Ancient Book Club	G98	LJ-B	29.04.25
	12:15 - 12:45	Senior Architecture Society	C61	TMS	29.04.25
	12:15 - 13:00	Cricket Nets	MUGA	GTW	29.04.25
	12:15 - 13:00	1st Year Gymnastics Club	Gym	CM	29.04.25
	12:30 - 13:00	Literary Board Games	N7	APJ/JCP	29.04.25
	12:30 - 13:00	Banned Books Club - 6th Form Lit. Soc	N10	BMH	29.04.25
	12:30 - 13:00	Key Stage 3 Drama Club	Assembly Hall	NEC	29.04.25
	12:30 - 13:00	6th Form Chem Soc	S305	DJD	29.04.25
	16:00 - 17:45	Combined Cadet Force (CCF) (3rd Year & above)	Fields/Gym/ Pool	FJH/DJN	06.05.25
	16:10 - 17:00	Ballroom & Latin Dance - Beginners (All Years)	Auditorium	KN	29.04.25
	16:15 - 17:15	Dark Room Photography	Room 305	DJD	29.04.25

RECREATIONAL OPPORTUNITIES *(continued)*

Please see separate lists for Music, Drama & Sports Activities

Day	Time	Activity	Venue	Staff i/c	Start date
Wed	07:15 - 08:00	Cross-Country	Outside Pavilion	JD	30.04.25
	12:00 - 13:00	Climbing	Gym	FJH	30.04.25
	12:00 - 12:40	Senior Academy	N17	SAG/GJL	30.04.25
	12:20 - 13:00	Advanced Dance (3rd - U6th)	O45	PSE	30.04.25
	12:25 - 12:55	CyberFirst Club (1st & 2nd Year Girls)	C63	RWT	30.04.25
	12:15 - 13:00	Board Games Club	G91	JS	30.04.25
	12:15 - 13:00	English Speaking Union (4th & 5th Yrs)	N9	PD	30.04.25
	12:30 - 13:00	History Club (All years)	N2	CCA	30.04.25
	12:30 - 13:00	Linguistics Club (4th Year & L6th)	N12	ARB	30.04.25
	16:00 - 17:00	Intermediate Ancient Greek	G99	PSE	30.04.25
Thur	16:15 - 17:15	Junior Art Club & GCSE Art Support Session	Art Dept	TMS	30.04.25
	12:00 - 12:30	2nd Year Academy	N2	HLB	01.05.25
	12:15 - 12:45	Senior Architecture Society	C61	TMS	01.05.25
	12:30 - 13:00	3rd Year Academy	N5	HLB	01.05.25
	12:20 - 13:00	1st - 3rd Year Book Club	N8	PD/SN	01.05.25
	12:25 - 13:05	L6th Medical Programme	Forrester 82	KHV	01.05.25
	12:30 - 13:00	Law Society (4th Year Up) by arrangement	Coach House	WB	01.05.25
	12:30 - 13:00	Backstage Club	Rm41/ Costume Store	SXC	01.05.25
	16:00 - 17:15	Junior Dance Squad (1st - 2nd Years)	Gym	PSE	01.05.25
	16:15 - 17:15	First Year Art Club	C61	TMS	01.05.25
Fri	16:15 - 17:15	Pottery Club (All years) & GCSE Art Support	C62	DXR	01.05.25
	12:00 - 12:30	Classics Help Session (GCSE pupils)	G98	LJ-B	02.05.25
	12:10 - 12:30	Classics Club (GCSE pupils)	G98	LJ-B	02.05.25
	12:10 - 13:00	Computer Aided Design Club (1st - 4th Yrs)	G52 (D&T)	SJE	02.05.25
	12:10 - 13:00	Christian Union (All Years)	Room 17	GJL	02.05.25
	12:15 - 13:00	6th Form Football Club	Ramshill	CHM	02.05.25
	12:15 - 13:10	Chess Club	Library	JS	02.05.25
	12:30 - 13:00	6th Form Linguistics Club	N6	KSR	02.05.25
	12:30 - 13:00	Intermediate Tap	M47	PSE	02.05.25
	12:30 - 13:00	Lower School Debating Club	Rm 19	HJW	02.05.25
	12:30 - 13:00	Senior Philosophical Society	N18	TXO	02.05.25
	16:10 - 17:10	Basketball	Gym	BDS i/c	02.05.25

MUSIC REHEARSALS / ACTIVITIES

i/c Mrs H J Purchase: hpurchase@churcherscollege.com

Monday	08:20 – 08:55	String Quartet	HJP	Rm 0
	08:20 – 08:55	Horn Chorus	PLC	M48
	12.25 – 13.00	L6th Brass Group	PLC	M50
	12:25 – 13:00	Junior Strings	HJP	Auditorium
	12.25 – 13.00	Junior Jazz Band	JJ	M48
	16.10 – 17.00	Singer Songwriters	JJ	M50 (+ practice rooms)
Tuesday	08:20 – 08:55	Theory	PY	M49
	08:20 – 08:55	String Quartet	HJP	Rm 0
	08:20 – 08:55	2nd Year Brass Group	PLC	M48
	12:25 – 13:00	Senior Choir	HJP	Auditorium
Wednesday	08:20 – 08:55	String Quartet	HJP	Rm 0
	08:20 – 08:55	SSA Choir	FAM	M48
	08:20 – 08:55	Saxophone Group	PLC	M50
	08:20 – 08:55	Senior Jazz Quintet	JJ	Studio
	12:25 – 13:00	Junior Choir	FAM	Auditorium
	12.25 – 13.00	Senior Chamber Choir	PLC	M47
	16.10 – 17.00	Blues Group	FAM	M48
	16.10 – 17.00	Music Tech Club	JJ	Studio
Thursday	12:20 – 13.00	Junior Wind Band	JJ	Auditorium
	16:10 – 17:00	Orchestra	HJP	Auditorium
Friday	08:20 – 08:55	Theory	PY	M49
	08:20 – 08:55	Clarinet Group	FAM	M48
	08:20 – 08:55	String Quartet	HJP	Rm 0
	08:20 – 08:55	Barbershop Group	GJL	
	08:20 – 08:55	Barney's Brass Group	PLC	M50
	12.00 – 12.30	Flute Group	PLC	M48
	12:25 – 13:00	Guitar Ensemble	JJ	M50
	12:25 – 13:00	Jazz Band	HJP	Auditorium
	16.10 – 17.00	Junior Chamber Choir	FAM	M48
	16:10 – 17:00	Senior Wind Band	PLC	Auditorium
Saturday	10.00 – 12.00	Rock School	JJ	Auditorium

College Ensemble Leaders

Senior Choir

Leader:
Max Cropley

Junior Wind Band

Leader:
Barney Pescud

Senior Wind Band

Leader:
Tristan Lewis

Junior Strings

Leader:
Abilene Howells

College Orchestra

Leader: Clement Siu

Jazz Band

Leader:
Lucas Pescud

Junior Choir

Leader:
Cecily Nanovich - Walker

CONTACTS

HOUSE SYSTEM

Collingwood: bseal@churcherscollege.com
Drake: jdaniel@churcherscollege.com
Grenville: jseaton@churcherscollege.com
Nelson: jharris@churcherscollege.com
Rodney: jyugin-power@churcherscollege.com

HEAD OF 6TH FORM

Mr William Baker wbaker@churcherscollege.com

BOYS & GIRLS' CRICKET

Rob Maier rmaier@churcherscollege.com

BOYS & GIRLS' SWIMMING

Stacey Angliss sangliss@churcherscollege.com

Bad Weather Sports Check link: <https://my.churcherscollege.com/fixtures>

PASTORAL

Mr Chris Jones, Deputy Head, Pastoral
cjones@churcherscollege.com
Mrs Suzanne Herrington, Senior Teacher, Pastoral
sherrington@churcherscollege.com
Mr Richard Hoe, Senior Teacher, Wellbeing, Inclusion
& Safeguarding
r hoe@churcherscollege.com

BOYS & GIRLS TENNIS

Cat Wilcockson c wilcockson@churcherscollege.com

BOYS & GIRLS' ATHLETICS

Kevin Maguire kmauire@churcherscollege.com

ACADEMY

Sasha Gibbins/Hannah Butler
sgibbins@churcherscollege.com

BASKETBALL

Ben Skirving i/c
Coach: A Byrne (07766 078527)
bskirving@churcherscollege.com

CHARITIES

Annel Sexton
asexton@churcherscollege.com

CHESS & BOARD GAMES

Dawn Greenall & Steve Reeves
sreeves@churcherscollege.com
dgreenall@churcherscollege.com

CLIMBING

Finn Hughes
fhughes@churcherscollege.com

COMPUTING

Rob Tong
rtong@churcherscollege.com

CURRICULUM SUPPORT

Ruth Saunders
rsaunders@churcherscollege.com

DANCE

Paige Elson
pelson@churcherscollege.com

DRAMA

Stacey Carty
scarty@churcherscollege.com

DUKE OF EDINBURGH'S AWARD

Simon Kelson DofE Manager
simon.kelson@churcherscollege.com
Steph Jones DofE Co-ordinator
sjones@churcherscollege.com

ECO CLUB

Tony Ostensen
tostensen@churcherscollege.com

ELECTRONICS

Matthew Kelly
mkelly@churcherscollege.com

ENGINEERING

Dr Richard Whittle
rwhittle@churcherscollege.com

EQUESTRIAN

Cathryn Hewett
chewett@churcherscollege.com

FENCING

Ben Skirving i/c
Coach: Derren Marshall
(07802 709301)
sussexdramaticcombat@gmail.com

FIRST CHALLENGE EXPEDITION - 2025

Jamie Daniel
jdaniel@churcherscollege.com

FITNESS

Kevin Maguire
kmauire@churcherscollege.com

GCSE & A Level Art

Tim Strange
tstrange@churcherscollege.com

LAMDA (Drama)

Suzanne Hall
lamda@churcherscollege.com

MEDICAL PROGRAMME

Dr Kirsty Verney
kverney@churcherscollege.com

MODEL UNITED NATIONS

Kate Corney/Hannah Butler/
Helen Trent
kcorney@churcherscollege.com
hbutler@churcherscollege.com
htrent@churcherscollege.com

OSCA

Pippa Hardisty
phardisty@churcherscollege.com

OXBRIDGE PROGRAMME

Dr Kirsty Verney
kverney@churcherscollege.com

PHOTOGRAPHY (dark room)

David Dunster
ddunster@churcherscollege.com

SAILING

Natasha Ashworth
nashworth@churcherscollege.com

SENIOR PHILOSOPHICAL SOCIETY

Tony Ostensen
tostensen@churcherscollege.com

TABLE TENNIS

Rick West
rawest@churcherscollege.com

WATER POLO

Stacey Angliss
sangliss@churcherscollege.com

WORLD CHALLENGE SENIOR EXPEDITION - 2026

Jamie Daniel
jdaniel@churcherscollege.com

CODE OF CONDUCT

We all wish to promote the highest possible levels of academic achievement, of personal conduct, encourage the development of self-discipline, personal integrity and mutual tolerance.

To achieve these aims all members of our community are expected:

to exercise common sense

to be clean and smart in appearance and to follow the school dress code

to be honest, truthful, courteous and co-operative

to respect other people and their property

to be caring and appreciative of the environment

to be dependable and conscientious in our learning

to make the best use of our varied abilities and interests

FIREFLY AND FILES ACCESS FROM HOME

HOW TO LOGIN TO FIREFLY AND ACCESS YOUR FILES FROM HOME.

In your browser type in **<https://my.churcherscollege.com>**

You will see our Intranet page, the same that you see at school. Click on the Firefly Senior icon to log in to Firefly, then click on the Staff and Students link. You will need to sign in using your school email address (**firstname.lastname@churcherscollege.com**) and the password that you use to log onto the school computers.

The Firefly website will also be accessible via the web browser app on mobile devices, but for convenience you may wish to download the mobile app for Microsoft Teams and the Firefly Learning Student app from both the Apple and Google Play stores. You will be asked to sign in to both using your school email address and password. You will need a school code of **CHURCHERSCOLLEGE** for the Firefly mobile app



To access your files, select the One Drive icon.

The Folder called 'Documents' is your school 'My Documents' folder and under that you will see all your files. You can edit them and save them and any changes will be seen when you log in at school.

To access your Email, click on the Outlook icon.

To use Office tools like Word or Excel or PowerPoint, select Office 365.

WHO CAN I TALK TO?

1st – 3rd YEAR

Your Peer
Support Team
(based in
the library)

SCHOOL COUNSELLOR

Mrs Wakeland

jwakeland@churcherscollege.com

SIXTH FORM

Form Tutor / Personal Tutor
Head of Sixth Form –
Mr Baker
Head of House

1st – 5th YEARS

Form Tutor / Head of House:

Collingwood House – **Mr Seal**

Drake House – **Mr Daniel**

Grenville House – **Mr Seaton**

Nelson House – **Mr Harris**

Rodney House – **Mr Yugin-Power**

5th Year Pastoral Co-Ordinator –
Mr James

HELPLINES

Childline 0800 1111 www.childline.org.uk

Young Minds youngminds.org.uk

The Mix 0808 808 4994

www.themix.org.uk

Frank 0300 123 6600

www.talktofrank.com

Beat Youth Helpline 0808 801 0677

www.beateatingdisorders.org.uk

www.nationalbullyinghelpline.co.uk

www.cybersmile.org

Papyrus 0800 068 4141

www.papyrus-uk.org

SCHOOL NURSES

Mrs Earl, Mrs Sloane, Mrs Taylor

schoolnurses@churcherscollege.com

CHAPLAIN

Will Hughes

revwillhughes@btinternet.com

Bruce Dean

Bruce@sheet.church

SAFEGUARDING/ CHILD PROTECTION OFFICERS

Deputy Head Pastoral – **Mr Jones**

Senior Teacher (Pastoral) –

Mrs Herrington

Senior Teacher (Wellbeing, Inclusion
& Safeguarding) – **Mr Hoe**

Head of Sixth Form – **Mr Baker**

BULLYING – WHAT YOU CAN DO?

Treat those around you with **respect and consideration**.

If you are bullied don't **over react** and don't let the bully see you are upset; but you must **tell someone**.

Tell anyone you can **trust** – a friend, an older pupil in the school, your parents, your Form Tutor or any member of staff.

Trust the school to deal with the matter sympathetically once you have reported it. Never be afraid that something will happen to you if you **seek help**.

Never be embarrassed to tell someone if you are being 'got at' in any way. Always remember it is the bully who is inadequate and he or she needs help as much as you do.

Tell someone if you know of **anyone** who is being made **miserable by bullying**.

Remember that **bullies continue** if they get away with it. If you do nothing when you know about bullying, **you are condoning it** and allowing it to carry on.

NOTES

NOTES

NOTES

NOTES

NOTES

2026

January

Su	M	Tu	W	Th	Fri	Sa
				1	2	3
4	5	6	7	8	9	10
11	12	13	14	15	16	17
18	19	20	21	22	23	24
25	26	27	28	29	30	31

February

Su	M	Tu	W	Th	Fri	Sa
1	2	3	4	5	6	7
8	9	10	11	12	13	14
15	16	17	18	19	20	21
22	23	24	25	26	27	28

March

Su	M	Tu	W	Th	Fri	Sa
1	2	3	4	5	6	7
8	9	10	11	12	13	14
15	16	17	18	19	20	21
22	23	24	25	26	27	28
29	30	31				

April

Su	M	Tu	W	Th	Fri	Sa
			1	2	3	4
5	6	7	8	9	10	11
12	13	14	15	16	17	18
19	20	21	22	23	24	25
26	27	28	29	30		

May

Su	M	Tu	W	Th	Fri	Sa
					1	2
3	4	5	6	7	8	9
10	11	12	13	14	15	16
17	18	19	20	21	22	23
24	25	26	27	28	29	30
31						

June

Su	M	Tu	W	Th	Fri	Sa
		1	2	3	4	5
6	7	8	9	10	11	12
13	14	15	16	17	18	19
20	21	22	23	24	25	26
27	28	29	30			

July

Su	M	Tu	W	Th	Fri	Sa
			1	2	3	4
5	6	7	8	9	10	11
12	13	14	15	16	17	18
19	20	21	22	23	24	25
26	27	28	29	30	31	

August

Su	M	Tu	W	Th	Fri	Sa
						1
2	3	4	5	6	7	8
9	10	11	12	13	14	15
16	17	18	19	20	21	22
23	24	25	26	27	28	29
30	31					

September

Su	M	Tu	W	Th	Fri	Sa
		1	2	3	4	5
6	7	8	9	10	11	12
13	14	15	16	17	18	19
20	21	22	23	24	25	26
27	28	29	30			

October

Su	M	Tu	W	Th	Fri	Sa
				1	2	3
4	5	6	7	8	9	10
11	12	13	14	15	16	17
18	19	20	21	22	23	24
25	26	27	28	29	30	31

November

Su	M	Tu	W	Th	Fri	Sa
1	2	3	4	5	6	7
8	9	10	11	12	13	14
15	16	17	18	19	20	21
22	23	24	25	26	27	28
29	30					

December

Su	M	Tu	W	Th	Fri	Sa
		1	2	3	4	5
6	7	8	9	10	11	12
13	14	15	16	17	18	19
20	21	22	23	24	25	26
27	28	29	30	31		

Holidays and Observances

1	Jan	New Year's Day	31	Aug	Summer Bank Holiday (WAL, ENG, NIR)
3	April	Good Friday			
5	April	Easter Sunday	31	Oct	Halloween
6	April	Easter Monday (WAL, ENG, NIR)	5	Nov	Guy Fawkes Day
4	May	Early May Bank Holiday	25	Dec	Christmas Day
25	May	Spring Bank Holiday	26	Dec	Boxing Day

